

# DERBYSHIRE OPEN ARTS 2020

**Bank Holiday Weekend 23rd 24th 25th May**  
FREE brochure and FREE admission to artist's venues countywide  
Opening hours 10am-5pm





## Welcome to Derbyshire Open Arts 2020

### An Open Studio Event

Bank Holiday Weekend Saturday 23rd, Sunday 24th and Monday 25th May.

Opening hours 10.00am - 5.00pm unless otherwise stated in individual entries.

Over the Spring Bank Holiday weekend, artists can be found in fascinating and surprising corners of Derbyshire. It is the perfect excuse to explore our beautiful county and visit inspiring work spaces including traditional studios, pubs, inspirational gardens, a hay barn, tuck shop and many others.

This free event sees artists and makers opening their doors to the public, to exhibit, sell and talk about their work. You will find them practicing a wide range of techniques, with specialists in printmaking, painting, drawing, textiles, ceramics, metalwork and much, much more. To explore the many different genres of art, visit our website [www.derbyshireopenarts.co.uk](http://www.derbyshireopenarts.co.uk) on your phone or tablet and try one of the many searches you can make to find which artist does what, where they are and how to get there. You can use our Google route planner to plan your own trail using artist's postcodes or download one drawn up by the artists themselves.

We request that artists ensure all material on show is suitable for family viewing. Many venues will be accessible to wheelchairs, use the website 'disabled search filter' or check each venue's information. Derbyshire Open Arts is a volunteer led organisation, run for and by artists and supporters of the arts in Derbyshire. It is funded entirely by artists' subscriptions and our brochure advertisers. We distribute brochures throughout Derbyshire and beyond the borders, in libraries, tourist information centres, hotels, galleries, cafes etc. Or you can download a brochure from our website. Please do support our advertisers, where you have the opportunity, and let them know where you saw their advert, as they are helping us to keep the event going.

Finally; if you are inspired by what you have seen and experienced through Derbyshire Open Arts, why not join our team? You can contact us to offer help with the 2021 event via [info@derbyshireopenarts.co.uk](mailto:info@derbyshireopenarts.co.uk) or leave a review on our Facebook page <https://www.facebook.com/derbyshireOarts/>

Most importantly, enjoy the event!

Jennie Merriman (Chair)

PS. Over the Bank Holiday weekend keep up to date on Social Media with our photographer/reporter and help us by sharing what catches your eye.



Andrea Joseph



Tracey Coverly



Charlie Collins  
Teaming up with NJITA

## Social Media

### Meet the team

Keep up with all things Derbyshire Open Arts, this year, by following us on Facebook, Instagram and Twitter. Through our social media platforms we aim to keep you up to date with all the news as it happens. We'll also link you and keep you in touch with your favourite 2020 participating artists; interaction between visitors and artists is really important to us. After all, it's one of the things that makes this event so special.

Leading up to the event we will be teaming up with Charlie Collins from No Jobs in the Arts (NJITA) who will spotlight the young / emerging artists, create a trail and feature interviews with them. So watch out for Charlie who will make regular posts on the @nojobsinthearts instagram page.

Closer to the May Spring Bank Holiday weekend, we will be inviting our artists to take part in a 'Show and Tell' hashtag campaign where they'll introduce themselves and tell you about their work and what they have in store for you at #DerbyshireOpenArts2020. Feel free to join in yourself too! We welcome participants and visitors alike to get involved in spreading the word about this unique event.

The team of volunteers are making connections with local press agencies, magazines, radio stations and newspapers, doing all they can to ensure that artists will have full exposure over the next few months. If you have a little time to spare and think you'd like to volunteer for next year's event please get in touch. We'd love to hear from you. This event happens because of its volunteers.

For now, get following us! Join in the discussion. Tell your friends. Give us a shout out!

We look forward to welcoming you into our studios in May 2020.

### Contact Info:

Email us: [info@derbyshireopenarts.co.uk](mailto:info@derbyshireopenarts.co.uk)



Find us on Facebook: <https://www.facebook.com/derbyshireOarts/> Tag us using @DerbyshireOarts



Find us on Twitter: <https://twitter.com/derbyshireoarts> Tag us using @DerbyshireOArts (hashtags using #derbyshireoarts)



Find us on Instagram: <https://www.instagram.com/derbyshireopenarts/> Tag us using @derbyshireopenarts & #derbyshireopenarts2020



## How to use this brochure

Artists are listed, according to venue location, both in the brochure and on the map at the back of the brochure. The map is an approximate guide only. On the artist's entry there is a description of the work, contact details, directions and any variations to the opening times. A grey background indicates that artists are sharing a venue, with the directions to it at the top of the page. Detailed location maps can be found by looking at the individual Google maps on our website - every artist has one.

Every effort has been made to ensure the information is accurate, however if you are making a special trip, we advise you to check with the artist in advance to confirm details. Please be aware that if a venue does not have a house number a sat nav or internet map may not take you right to the door.

### Reference symbols used on the artists' pages are:

- C = Commissions undertaken
- T = Teaching, workshops, demonstrations or talks undertaken.
- D = Fully disabled access
- d = Partial disabled access  
Not all venues have disabled access; you can use a search filter to find venues with disabled access on the website or contact the artist for more information.
- P = Preview evening on Friday 22nd May - all are welcome (the website has a search filter to find all artists who are holding previews). You can also email/phone the artist in advance for times and details if you wish to attend a preview evening.

All venues will be open over the Bank Holiday Weekend. 23rd, 24th, 25th May

01

CTDdP

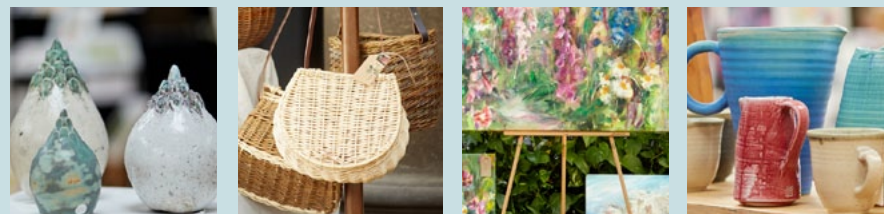
## ART AND ARCHITECTURE TRAIL



**MELBOURNE FESTIVAL...**  
**19 - 20 September 2020**  
**ART - ARCHITECTURE - FOOD - MUSIC**  
*Art to enjoy, to intrigue and to take home...*  
*Family friendly with 150 artists in 70 venues*  
[melbournefestival.co.uk](http://melbournefestival.co.uk)  
 Melbourne - South Derbyshire - DE73 8DW

# Great Dome Art and Design Fair

**PEAK**  
DISTRICT  
ARTISANS



Original Artwork • Unique Gifts • Live Music  
Free Talks and Demos • Artists' Postcard Raffle

## 9th - 11th October

**Fri - 6.30pm - 8.30pm**

**Sat - 10am - 5pm**

**Sun - 10am - 4.30pm**

Devonshire Dome, Buxton  
Derbyshire SK17 6RY

**£2**  
Entry

[peakdistrictartisans.co.uk](http://peakdistrictartisans.co.uk)


Inspired by  
the Peak District






**BANKS MILL**  
**OPEN STUDIOS**  
 27-29 NOV  
**2020**

Banks Mill Studios  
 71 Bridge Street, Derby, DE1 3LB  
[www.banksmill.co.uk](http://www.banksmill.co.uk)

FOLLOW US:  
  

 UNIVERSITY OF DERBY



**HADFIELD OPEN ART SHOW**

**10 YEAR ANNIVERSARY**

**Saturday 23<sup>rd</sup> May to Saturday 30<sup>th</sup> May**  
 Hadfield Hall & The Craft Barn, Station Rd, Hadfield

 DERBYSHIRE County Council  
 Improving life for local people

 Hadfield Town Council  
 Working for our community

For more information visit:  
[www.hadfieldhall.wordpress.com](http://www.hadfieldhall.wordpress.com)  
 or email [hadfieldartshow@gmail.com](mailto:hadfieldartshow@gmail.com)

Exhibition of children's & adults' artwork

Artists in residence:  
**Jean Hobson & Karen Heywood**

Hadfield's first  
**Pro Loco competition**

**Beginners' workshops**  
 in oils, acrylics, pastels & portraiture

Family workshops &  
 children's **Art Trail**

Talks by **Ghislaire Howard**  
 ('The Human Touch') & **Michael Howard**  
 ('Lowry & Major')

[www.openupsheffield.co.uk](http://www.openupsheffield.co.uk) [info@openupsheffield.co.uk](mailto:info@openupsheffield.co.uk)

**2020**  
**open up**

**Artists open studios**

Free, open access to artists and their studios in Sheffield and South Yorkshire

Saturday 2nd, Sunday 3rd, Friday 8th, Saturday 9th and Sunday 10th May  
 11am to 5pm



  
**John Connolly**

  
 Nationally Acclaimed Artist

  
 Working in Acrylics and Mixed Media.

  
 Commissions Undertaken

Individual Group Tuition

**T 07967 316622 [www.connollyart.com](http://www.connollyart.com)**

**Open Studio and Sale 22nd to 27th May 2020**

Ormscliffe Studio/ Gallery - 16 Langwith Road, Bolsover, Chesterfield, Derbyshire. S44 6HQ





### A Tribute to David Hoodith by Ruth Marsden and Andy Rodgers

'What paintings have you got ready for Derbyshire Open Arts this year Dave?'

'They are still in the (paint) tubes,' says Dave with a smile and a shrug.

I first knew Dave as a picture framer and he was always a rather busy one, especially at this time of year, prioritising other peoples framing needs over his own work, often toiling late into the night. Yet every year he produced fantastic new paintings. 'Watch it, the paint might still be wet' he would say.

This year DOA at 67 Mellor Road we will be without our dear friend and colleague David Hoodith, who died suddenly on October 19th 2019. It has been a hard decision to go ahead with the exhibition without him this year, but I think he might be cross if we didn't.

Dave first took part in DOA in 2007 and joined us at 67 Mellor Road in 2008, where he has shown his work every year since. We watched his work develop and grow, from his accomplished watercolour paintings to realising a long held ambition - his recent striking, semi abstract cityscapes. Although he had a tendency to underestimate it, Dave possessed a remarkable talent as an artist. He was also a joy to be around and brought so much fun and laughter to not only this event, but to all his friends and everyone who knew him.

Woman: 'I would really like to buy that print of yours, but I haven't enough money on me'

Dave: 'How much have you got in your purse?'

Woman fishes for her purse and produces a five pound note.

Dave: (Handing over the print) 'It's yours then!'

That is just one example of Dave's generosity. Dave was many things, not only generous, but kind, funny, a reader, a thinker, a man with a wide variety of interests and of course a gifted artist.

A bit of a Leonardo really, only I don't think Leonardo would have been half as much fun!

We are honoured to be showing some of Dave's work at 67 Mellor Road this year and although we will miss him dreadfully, our old mate will be with us in spirit.

Ruth Marsden.



Early Days in Derbyshire Open Arts

"An artist, seeing our table-full of brochures, told us his name was David Hoodith, and expressed disappointment that here was a new arts event he hadn't heard of, so couldn't take part. Instead, he jumped at our invitation to join the committee, and was hugely helpful in those early years in developing support and interest in our annual event, mainly in his home town of New Mills

Resulting from the input and enthusiasm of David and his fellow-artists, the arts scene in New Mills has burgeoned into the thriving entity that it is today."

Andy Rodgers, former Chair, Derbyshire Open Arts.

Ally Rodgers, aided by her husband, Andy, instigated Derbyshire open Arts in 2006 and first met David at an event at Buxton Dome.



Cat and Fiddle



Mont Saint Michel

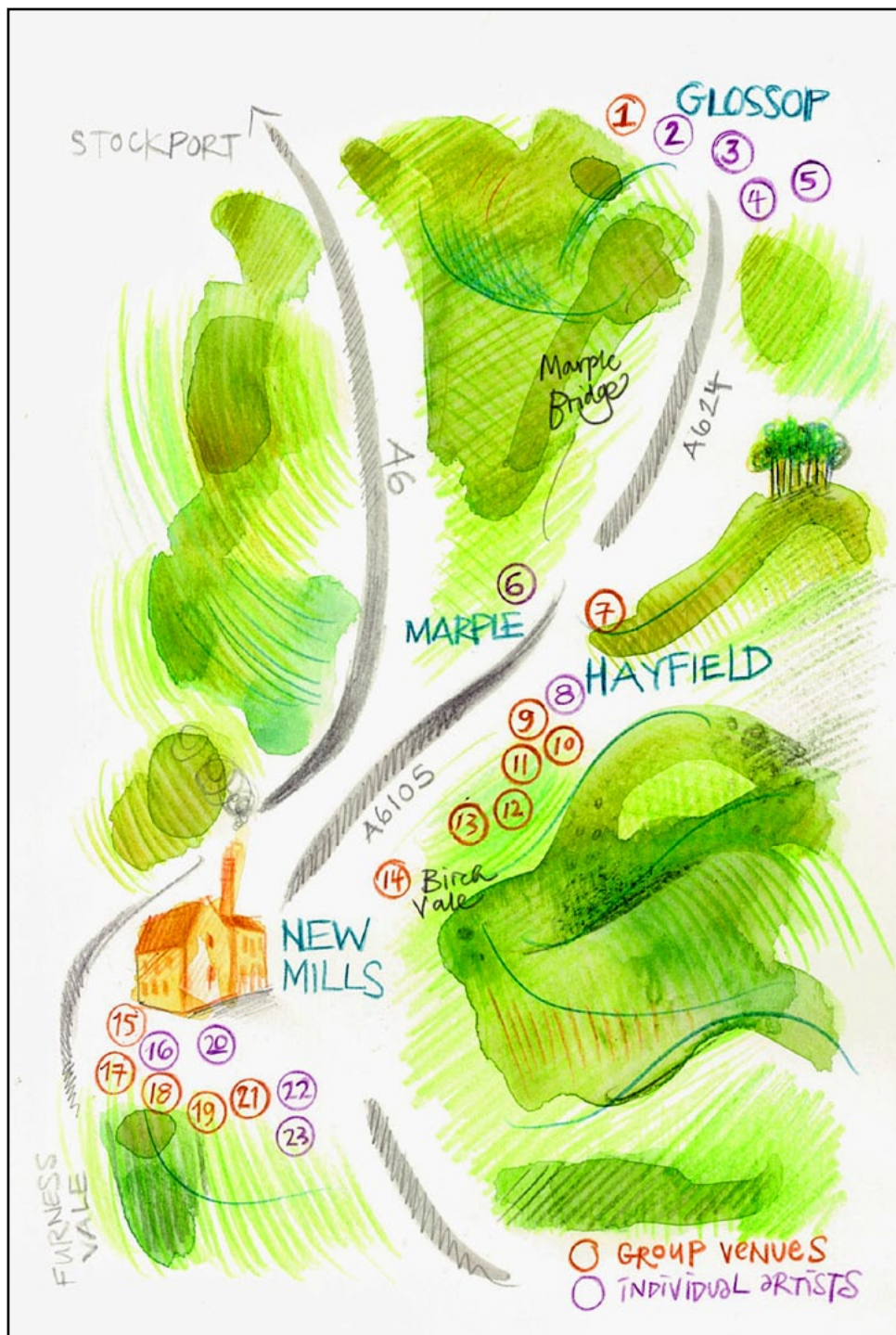


City Scape 2019



Island Series





01

1a - 1b. Victoria Hall Artists, Talbot Street Victoria Hall Glossop SK13 7DQ

From the main junction in central Glossop travel along High Street West in the direction of Manchester. At the next set of traffic lights turn right onto Arundel Street. Continue for about 400m, Victoria Hall is on the right-hand side.

There will be a preview at the venue with live music and drinks on Friday 22nd May, 7-10pm.

a

## Pippa Hicks

Abstract paintings using acrylics, combining the familiar with abstract in a whimsical way. Inspired by nature, the paintings are full of energy and colour. Illustration mostly in pen, some pencil, capturing the everyday in a way that's sure to bring a smile to your face.

07825 536717

[pipsypuffinart@outlook.com](mailto:pipsypuffinart@outlook.com)

<http://www.etsy.com/shop/pipsypuffinart>



b

## Victoria Hall Artists

ADRIAN HOLT: Unusual ceramic and plaster sculptures. CHRIS TAYLOR: Calligraphy and hand lettering in a variety of media. DENISE HEYWOOD: Semi-abstract floral and hedgerow paintings in watercolour. DAVID TOFT: Photographs capturing the beauty and diversity of people and landscapes. GRAHAM LARKIN: Paintings in a variety of media. JEAN HOBSON: Paintings, prints and drawings of city and landscapes. JO KISBY: Glossop artist, specialising in oil and charcoal portraits. KAREN HEYWOOD: Landscape and figurative paintings in a variety of media. LYNNE TAYLOR: Hand-built ceramics inspired by nature, created using natural foraged tools.

07890 799123

[ceramics@adrianholt.com](mailto:ceramics@adrianholt.com)

<https://facebook.com/adrianholtceramics/posts>



02

## Simon Parkin

Expressive paintings inspired by the dramatic light, space, colour and textures of the Peak District as well as work exploring the power and mystery of the sea, with many paintings of Scotland and Wales. Studio and Gallery has three floors of paintings, prints, booklets, cards.

Simon Parkin Studio and Gallery, 43 high street, Glossop SK13 8PN

07842 151416 [simon@simonparkin.co.uk](mailto:simon@simonparkin.co.uk)

<http://www.simonparkin.co.uk>

1 minute from the central set of traffic lights in Glossop, take the direction of Sheffield on the A57, 1 am on the main street next door to the photography studio opposite Esso Garage.

Saturday 23rd 10am-5pm Sunday 24th 10am-5pm Monday 25th 10am-5pm Saturday 30th 11am-5pm Sunday 31st 11am-5pm.





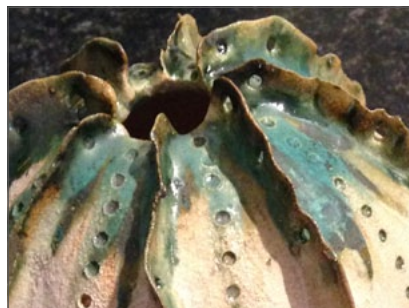
03

## Helen & Phillip Cunliffe

Mixed media landscapes of Derbyshire, Cornwall and North Wales. Stoneware and porcelain hand-built decorative ceramics often organic or landscape inspired and functional garden pots.

4 Lower Bank Glossop SK13 8PY  
07925 558003  
cunliffe555@btinternet.com

Travel along High Street East and turn down Mill Street going past the Prince of Wales. Park near the bridge and walk down. PLEASE DO NOT DRIVE YOUR CAR DOWN THIS ROAD. THERE IS NOWHERE TO TURN AROUND. PARK NEARBY.



04

## Geraldine Darbyshire

Alcohol Ink on Glass. Large Pictures, Wall hangers, Coasters. Abstracts, Flowers, Animals and Landscape Pictures.

14 Lower Bank Glossop SK13 8PY  
07760 122183  
gerrydarbyshire@gmail.com

From the traffic lights in the centre of Glossop take the Sheffield road - then after 'Quick Fit' take 2nd right into Milltown. Then take the third right into Lower Bank. Our house has the Lower Bank sign on it.



05

## Glass, Wood & Wool

Glassmaker Kay Stowell, Woodturner Colin Mail, and Textile Artist Linda Moss display individual works and innovative collaborations from light-reflective panels and humorous animals, hardwood bowls and sticks to hand-woven hangings, accessories and local landscapes. Daily workshops/demonstrations (see DoArts website entry); refreshments in quirky artist's home.

6 Cliffe Road Glossop SK13 8NY  
07825 128852 linda@linda.moss.name  
http://www.lindamoss.co.uk

Bottom of Cliffe Rd at junction with Cross Cliffe. (very narrow, so park by Old Mill opposite Brook View.) Easy walk from town centre, past KwikFit, turn right off A57 onto Milltown, 400 yards up hill. Venue will be signposted.



06

## Jan Vallance

I work both on my narrowboat and from my canalside studio. Canals are the primary influence on my current paintings. Acrylic is my main medium as it dries quickly and allows me to work in multiple layers creating depth and intrigue in a simple scene

The Art Boat Studio, Goyt Mill, Upper Hibbert Lane, Marple SK6 7HX  
07474 000783 janvallance@theartboat.co.uk  
https://theartboat.co.uk

Follow Strines road from New Mills to Marple. Immediately after Marple centre turn left at the lights into Hibbert Lane. Continue straight until you reach Goyt Mill on the right. Park in main carpark. Also open by appointment. Tel 7474 000783.



07

7a. - 7b. Glossop Road Throstle Farm Little Hayfield, High Peak SK22 2NG

From New Mills : Join the A624 in Hayfield - towards Glossop. On entering Little Hayfield 30 mph area, with cottages on both sides, turn sharp right before the wooded area, up the tarmac lane to 'Throstle Farm' and parking.

a

## Hayfield Artists at Throstle Farm

PAT EVANS Paintings and drawings excited by dramatic changes in light and colour. LYNDON EVANS Charcoal and watercolour art, texture in landscape. MARIA TARNOWSKA Ceramic Designer - inspired by wildlife. Each piece is unique, STEPHEN GRIEVE Jeweller/Goldsmith - hand crafted jewellery inspired by natural textures.

01663 742255  
throstlefarm@gmail.com  
http://www.hayfieldartists.co.uk



b

## Stephen Grieve

Stephen Grieve is a jeweller and goldsmith, creating simply, beautiful pieces in silver, sometimes combined with gold and copper. His work explores a variety of techniques, resulting in unique handcrafted pieces. He has exhibited at, Craftsmen in the Gallery, D.O.A, Belmont Arts and Goldsmiths Hall.

07817 257322  
artisanjewellery@hotmail.co.uk  
http://artisanjewellery.net



08

## James Horton

A diverse collection of 2D artwork/illustrations based around oil paintings and ink drawings.

2 Lea Road Hayfield SK22 2HE  
07740 301385  
jameshortonsart@gmail.com

Enter Hayfield at the main crossroads on the A624 bypass. Drive through village past the Pack Horse Inn and take the next left onto Swallow House Lane. Proceed under bypass bridge and take next right onto Lea Road.



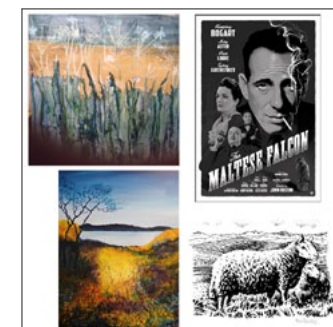
09

## Hayfield Artists At The Packhorse

MEL BOWDEN: dramatic sea and landscapes : acrylic and oil. KEN BOWDEN: detailed work in pencil, ink and scraperboard SUE SHEPPARD: mixed media 2D pieces experimenting with textures and layers. ANDREW SWAINSON: Professional illustrations related to film industry. Credits Toy Story 4, Alien, Cars 3.

The Packhorse, Market Street, Hayfield, High Peak SK22 2EP  
07825 663005  
sueshepard@hotmail.co.uk  
http://www.hayfieldartists.co.uk

The Packhorse is on the main street of Hayfield. There is ample parking on Market Street. The Packhorse is open from MIDDAY to 5.30pm.



10

CD

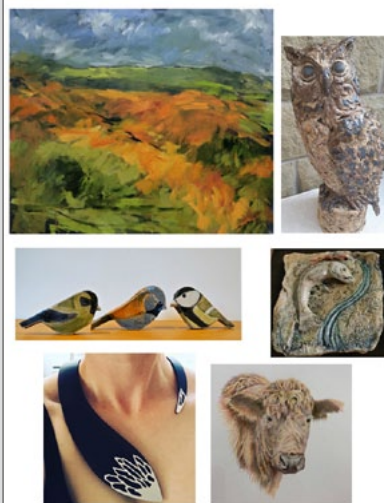
## Hayfield Artists at Ashlar Studio

Ashlar, Market Street, Hayfield, High Peak SK22 2EP

Ashlar is next to the Pack Horse pub, Market Street, Hayfield. Parking is on Market Street. Walk up the drive to Ashlar which is modern, architecturally designed house with solar panels.

**SUSAN MCCALL:** Abstracted paintings inspired by dramatic light, colour and atmospheric changes in landscape. **ANN LYON:** Hand-built ceramic pots and sculptural pieces reflecting natural forms and local environment. **JO TOFT:** Hand-built stoneware ceramic sculptures inspired by form, textures and colours of the natural world. **FAITH FRASER:** Three-dimensional ceramic pieces based on rhymes and stories. **JANET WASS:** Elegant jewellery laced with pattern combining and contrasting sterling silver with colourful synthetics materials. **ANNE JOHNSON:** Sensitive pencil and crayon drawings of animals and natural form. Powerful and elegant willow sculptures influenced by wildlife.

01663 742199  
mccallhayfield@gmail.com  
<http://www.hayfieldartists.co.uk>



11

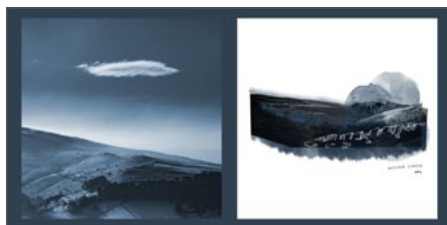
CP

## Elephantstones Gallery

Elephantstones Gallery is home to local landscape artworks by photographer Simon Bridges and illustrator Eve Lumai Bridges, Scandinavian vintage collectables and ethically sourced, handmade gifts and homeware. The artworks are presented as ready to hang framed prints.

Elephantstones Gallery, 6 Church Street, Hayfield SK22 2JE  
01663 742 835 [whato@elephantstones.co.uk](mailto:whato@elephantstones.co.uk)  
<http://www.elephantstones.co.uk>

Located in the centre of Hayfield opposite the post office and down from the chippy, just up from the church.



12

CP

## Beckett, Gale & Helm

All three artists draw, paint and printmake in an increasingly experimental and expressive style. They produce landscapes, still life, life studies and abstract and semi-abstract work in a variety of media and mixed media.

23 Chapel Road Hylstone Hayfield SK22 2JF  
07825 252003  
[barbara.helm@hotmail.co.uk](mailto:barbara.helm@hotmail.co.uk)

On the left hand side coming from Glossop on the A624. 150 metres from the turn in to Hayfield village. Parking in the village and taking the footpath is recommended.



13

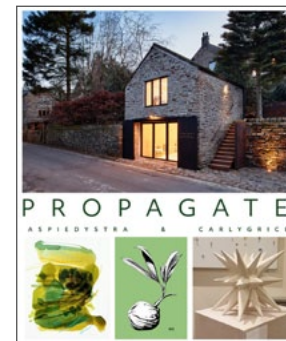
C

## Propagate - AspieDystra & Carly Grice

A curation of abstract, hand-carved stone sculptures by Carly Grice and plant based art by (one half of) AspieDystra - Andrea Joseph. The work, connected by forms found in nature, is displayed against a verdant backdrop in a botanical takeover of The Loft.

The Loft, Valley Road, Hayfield SK22 2LP  
[hello@thelofthayfield.com](mailto:hello@thelofthayfield.com)  
<http://www.thelofthayfield.com>

Parking is available at the Sett Valley Trail car park on Station Road. From there, cross Chapel Road (A624), turn right, up Church Street then left onto Valley Road. The Loft is on your right.



14

CPd

## Potteryand\_pine\_studio

Potteryandpine\_studio - a new workspace in Birch Vale, High Peak, shared by Natasha Lalljee (multidisciplinary artist - adores mixing mediums, creating installation, lover of lino and can't resist a new paint brush) and Scruffy Dog Creations (Ruth Taylor creator of things yarn-y wearables to hang-ables).

Potteryandpine\_studio, Spinnerbottom Birch Vale, High Peak  
SK22 1BW  
07900 993268  
[scruffydogcreations@gmail.com](mailto:scruffydogcreations@gmail.com)

As Station Road crosses the river and become Spinnerbottom - potteryandpine\_studio is on the left opposite Crescent Row. Between Sett Valley Cafe and The Sycamore.



15

a

Cd

## Jenny Rothwell

Handmade jewellery reflecting aspects of the English countryside, including hand-painted anodised aluminium and textured silver.

07530 097834  
[jennyrothwell@outlook.com](mailto:jennyrothwell@outlook.com)  
[https://www.instagram.com/jenny.rothwell\\_jewellery](https://www.instagram.com/jenny.rothwell_jewellery)



b

CTd

## Ruth Marsden

Acrylic paintings and limited edition prints of people in everyday situations, a series of iconic rock stars and paintings of the everyday objects that surround me. The venue will also exhibit paintings and prints by the late David Hoodith.

07779 724330  
[ruthmarsden1@btinternet.com](mailto:ruthmarsden1@btinternet.com)





15

c

Cd

d

CT

15a - 15d. 67 Mellor Road New Mills SK22 4DP

From Market Street, New Mills, continue on to Spring Bank for approximately 0.3 miles. Turn left onto Mellor Road. The venue is on your left, 100m past the church. A warm welcome with art and delicious refreshments.

## Jo Basnett

My unglazed barrel fired pieces have a quality of natural earth with a contemporary twist, often incorporating 24 carat gold leaf. My 'Blueware' is a mix of burnished slip: the sgraffito intricately dripped with glaze.

07765 674499  
jobasnett@gmail.com



## Anne Humberstone

The gorgeous scenery and nature of the Peak District, North Wales and Scotland are a constant inspiration for my artwork. The media of textiles, printmaking and pastels allow me to indulge my love of colour and texture.

07926 267712  
anne.owl@btinternet.com  
<http://annehumberstone.co.uk>



16

c

## Alison Vasey

Alison paints in oils and watercolour. She is focused on capturing the transient light effects across land and seascapes. She creates beautiful atmospheric work inspired by walks in Peak District and beyond. Limited edition prints are available.

49 Mellor Road New Mills SK22 4DP  
07967 325367 alivasey@gmail.com  
<http://www.facebook.com/alisonvaseyart>

From Market Street, New Mills, continue to Spring Bank for approximately 0.3 miles. Turn left onto Mellor Road and follow the direction signs!



17

a

CTD

17a - 17h. Providence United Reform Church, Mellor Road, New Mills SK22 4DP

8 artists at this venue. From Market Street, New Mills continue onto Spring Bank for approximately 0.3 miles. Turn left onto Mellor Road. Church is on your right, hall entrance down side lane. Parking at back, on-street or in town. Homemade cake and refreshments!

## Adele Kime

Handmade jewellery inspired by organic forms and patterns. Colourful hand-painted anodised aluminium range with imagery from nature, alongside etched silver pieces and unique textile ranges. Adele has taught jewellery making for 20 years and runs workshops / courses at her canal side studio. Commissions welcome.

07891 572677 adelekimejewellery@gmail.com  
<http://www.facebook.com/adelekimejewellery>



17

b

D

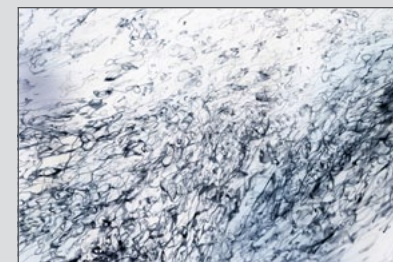
17a - 17h. Providence United Reform Church, Mellor Road, New Mills SK22 4DP

8 artists at this venue. From Market Street, New Mills continue onto Spring Bank for approximately 0.3 miles. Turn left onto Mellor Road. Church is on your right, hall entrance down side lane. Parking at back, on-street or in town. Homemade cake and refreshments!

## Michela Griffith

An eight year dialogue with the River Dove near Michela's home has led to a dramatically different and highly individual photographic practice in between the representational and the abstract. New work explores natural mark-making, with water as canvas.

07986 512077  
info@michelagriffith.com  
<http://www.michelagriffith.com>



c

Cd

## CathDunn

My paintings are based on natural forms and a sense of place. Natural forms provide me with the curves, patterns and colours for semi-abstract. I enjoy experimenting with different paint media - watercolour, oils, collage to create a sense of rhythm, colour and Derbyshire.

07720 299984  
cath@cathdunn.me.uk  
<http://www.cathdunn.me.uk>



d

CD

## Howard Levitt

A professional artist and illustrator working with acrylics, oils, and pen and ink. Inspired by the scenery of the Peak District and Cumbria Howard creates paintings and drawings of dramatically contoured landscapes, formidable skies and stunningly detailed trees. Originals and limited edition prints for sale.

07749 406725  
hlevitt.art@gmail.com  
<http://www.howardlevitt.co.uk>



e

Cd

## Emma Sidwell

Emma works from her imagination, primarily in highly detailed pen and watercolour. She creates worlds rich with characters and conflicts, constructs and creatures, some dark and some more whimsical. Her resin jewellery showcases individual details from these images.

07902 808105  
elliadesigns@gmail.com  
<https://elliadesigns.weebly.com/>



17

f

CTD

g

TD

h

CD

17a - 17h. Providence United Reform Church, Mellor Road, New Mills SK22 4DP

8 artists at this venue. From Market Street, New Mills continue onto Spring Bank for approximately 0.3 miles. Turn left onto Mellor Road. Church is on your right, hall entrance down side lane. Parking at back, on-street or in town. Homemade cake and refreshments!

## Hannah Dodd Textile Artist - Peak 8

Quirky designs to provoke humour and make you smile. Hannah uses wool and stitch to create 3D felted designs. Inspired by the Peak District her work includes framed large pictures and prints, to large and small animal sculptures and needle felted jewellery

07590 496926  
hannahdoddtextileartist@gmail.com  
<http://www.hannahdoddtextileartist.co.uk>



## Lin Cheung

Lin is an intuitive abstract artist whose work is inspired by nature and archaeology. Mixing media, Lin works on a variety of surfaces beginning with playful mark making including words and poetry. Materials are applied freely, the process of play continues until forms emerge.

07985 936393  
linc.art@btinternet.com  
<https://linc-art.com/>



## Pentimento Ceramics and Print

Caroline and Jaki produce hand built ceramic animal sculpture, British birds mounted on wooden plinths and handmade ceramic tiles. Tiles are available framed or unframed and are hand decorated with bird and insect motifs. Their recent printmaking work includes a series of British bees.

07980 342938  
pentimentoceramicsandprint@gmail.com  
<http://www.pentimentoceramicsandprint.co.uk>



18

d

## Gilly Gostick

New for 2020 : Gilly draws and paints, inspired by nature, walking and gardening. Original drawings, paintings, mixed media artworks, limited edition prints and art cards exhibited and for sale. Cakes (including vegan and gluten free) + tea/coffee. Proceeds to Blythe House Hospice.

56 Hyde Bank Road New Mills, High Peak SK22 4NH  
07880 763388  
gillygostick@gmail.com

Close to the junction of Hyde Bank Road/Hayfield Road, opposite the Co-op Supermarket. Immediately after the first row of cottages, walk down the drive by the end terraced house to the studio. Limited on-street parking. Please use town car parks.



19

CTd

## The Textile House

From the centre of New Mills take Market St then Spring Bank. After 1/4 mile turn left into Mellor Rd. Stafford St is the first on the right before the Providence Church. Please park on Mellor Road.

Debbie, Sheila, Joy, Val and Alison invite you to an exhibition of modern and traditional patchwork and quilting, beadwork and embroidery, crochet and knitting all in the comfort of Debbie's home. Join us to welcome our new artist Alison. View her lovely bags and sample her delicious coffee and walnut cake. As usual there will be complimentary homemade cakes and a cuppa.

8 Stafford St New Mills SK22 4DR  
01663 749741  
valcopestake@hotmail.com



20

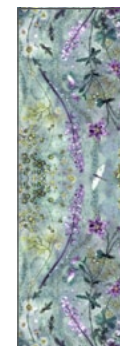
CTPd

## Joanna Allen

My artwork includes mixed media paintings and intaglio prints, including hand coloured etchings, drypoints, collagraphs and monoprints. Recurring themes include strange little birds, magical gardens and romantic florals. Selected artworks are scanned and manipulated in Photoshop, then digitally printed onto luxury silks, velvet and linen.

30 High Street New Mills SK22 4AL  
01663 742507  
joannaallen7@hotmail.co.uk  
<http://www.joannaallen.co.uk>

30 High Street is an old Victorian shop with a large window. High Street is off Market Street in New Mills. Number 30 is further down on the right hand side just after the Book Shop, Gallery and Haberdashery.



21

CTd

## Gallery 23

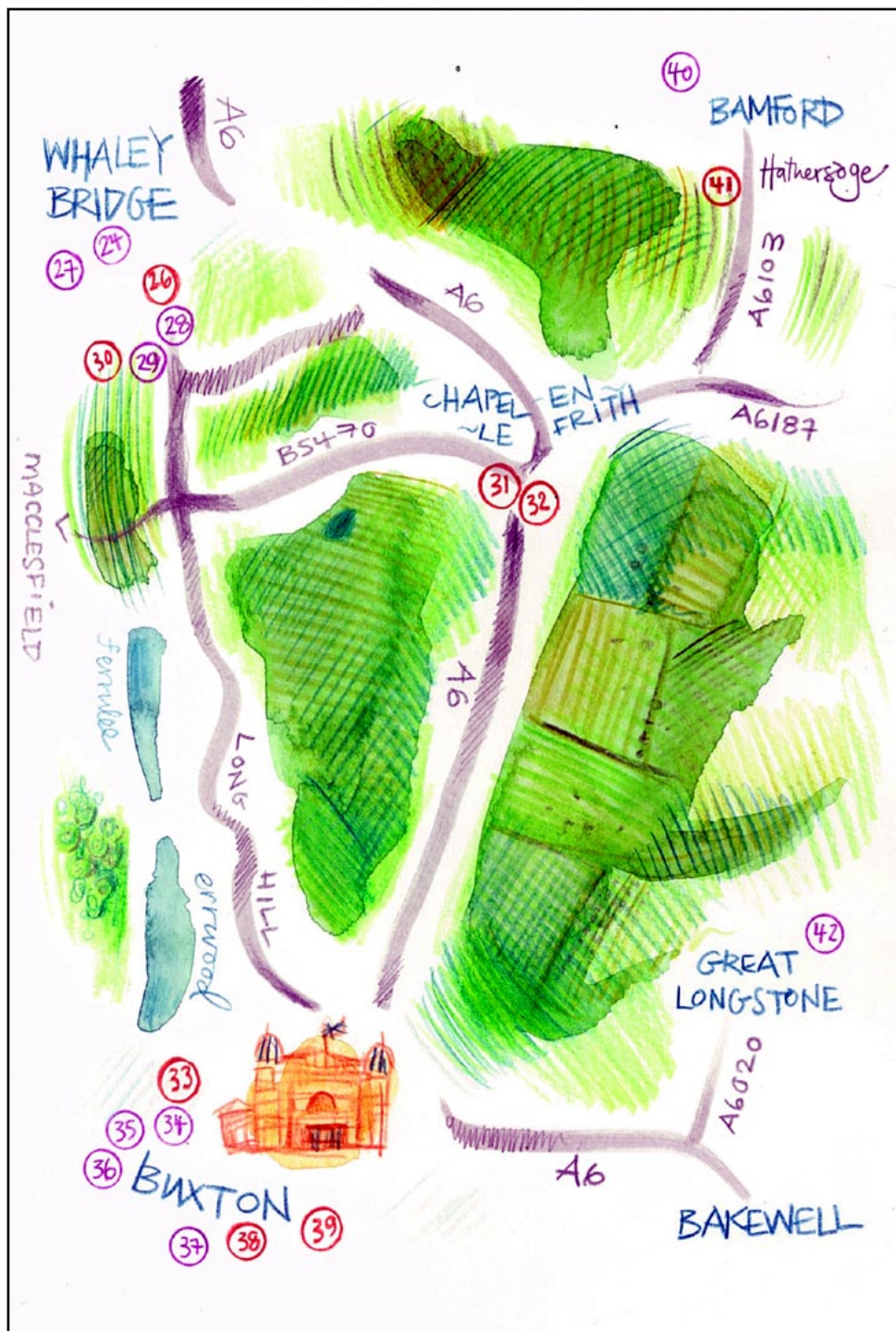
Gallery 23 shows the work of Fine Art Photographer Peter Aitchison and Mixed Media Artist Christine Ormsby. Peters work concentrates on travel and street photography from around the world. Christine's influence is from the landscape around us painted using various techniques.

Gallery 23, 12 Union Road, New Mills SK23 2ES  
07478 7271123  
pete@gallery23.co.uk  
<http://www.peteraphoto.com>

Gallery 23 is half way down Union Road next to Lloyds Bank.







22

## Harry Frost

I am inspired by the natural landscape, particularly my emotional response to being immersed in the world of land, sea and sky. Working from memory I create expressive oil paintings evoking moods or atmospheres suggestive of a sense of place and time.

Woodbourne House, Woodbourne Road, New Mills, High Peak SK22 3JX  
07456 767977

harry.frost@acf-consulting.co.uk

<http://www.harryfrost.wixsite.com/harryfrostartist>

Woodbourne Road is situated off the A6 at the traffic light junction with the A6015 (Albion Road) for New Mills. Travel up Woodbourne Road to the very end. Woodbourne House is the last house on the left.



23

## Christine Webb

I make hand-printed linocuts: a process that lends itself to bold designs. My recent dog prints capture the essence of the breed and incorporate elements of pattern and movement, such as a woven blanket or ripples on a sandy beach.

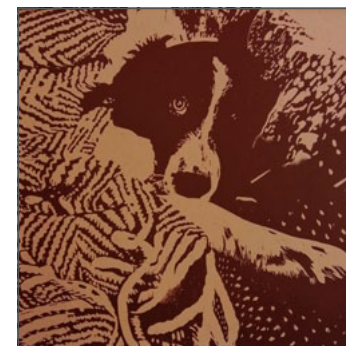
22 Hockerley Lane Whaley Bridge SK23 7AT

07905 061030

chriswebbprintmaker@gmail.com

<http://www.chriswebbprintmaker.co.uk>

Turn onto Whaley Lane (between the Railway pub and the train station car park) follow the road up the hill and take the 3rd turning on the right. The venue is approx. 100yds on the left.



24

## New Horwich Studios

Tamsin Cunningham and Elizabeth Swift will be exhibiting a dynamic range of mixed media textiles. Materials used will consist of fleece, handmade paper, fabric, acrylics and ceramics. Inspired by animals, landscapes, textures, repetition and lots more!

20 New Horwich Road Whaley Bridge, High Peak SK23 7LG

07977 519843

tamsinc@yahoo.co.uk

From Whaley Bridge, turn left up Old Road at the Bike Factory and then take the 2nd left up New Horwich Road. Coming from Chapel Road, turn on to Old Road at Nimbus Antiques and then 2nd right.



### See behind the scenes .....

If you enjoy getting involved, multi tasking and generally being helpful why not enquire about volunteering with our friendly, hands on committee.

The event takes place annually and the management of it involves lots of organisation, promotion, some technical skills and distribution.

If you have marketing or technical skills we would love to hear from you ...

To find out more email [info@derbyshireopenarts.co.uk](mailto:info@derbyshireopenarts.co.uk)





26

C

## Art at No.16

Barbara Plant and Rosemary Wignall create art works which are influenced by the landscape around us. The multi media works that will be on show, encompass oil, acrylic, watercolour, collage and ceramics.

16 New Horwich Road Whaley Bridge SK23 7LG

07841 680940

barbara.plant@icloud.com

Coming from Chapel-en-le-Frith turn right at onto Old Road, then take the second on the right up New Horwich Road. Coming from Whaley Bridge train station towards Buxton turn left onto Old Road then take second on left.



27

CT

## Tracey Coverley

Full-time artist working on the edge of the Peak District producing both 2D and 3D textile works using fabric and thread. Operating under the name 'Handmade in Horwich End' and enjoying creating art; I thrive on the challenge of commissions.

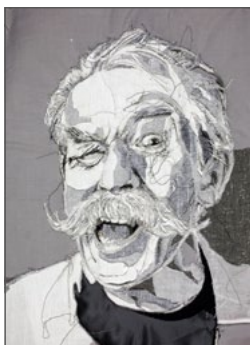
9 Lower Macclesfield Road Whaley Bridge SK23 7DD

07708 081842

traceycoveley@gmail.com

<http://www.handmadeinhorwichend.com>

Located approx. 50m from the crossroad and only set of traffic lights in Whaley Bridge. There is no parking in the immediate vicinity so walking using our local trail map is advisable (available to download from trail maps page)



28

CPTd

## Rebecca Clitheroe

My 'Hidden Histories' illustrations are artworks of iconic buildings and landmarks with their own 'built in' stories. By applying a layering technique, black and white images of significant historical reference to each building are 'concealed' with pastel crayon to create a unique and intriguing appearance.

34 Chapel Road, Whaley Bridge SK23 7JZ

07946 501489 rebeccaclitheroeartist@gmail.com

<http://www.rebeccaclitheroe.com>

I'm on B5470 Whaley Bridge to Chapel-en-le-Frith road, between Nimbus Antiques and The Drum and Monkey pub. Signposted left from Horwich End traffic lights if approaching from Whaley Bridge centre, straight on from Macclesfield (B5470) and right from Buxton A5004. Evening of Friday 22nd May (exhibition of originals).



29

## Helen Brocklehurst

Pottery- Stoneware combined with glass, including bowls, wall plaques and garden sculptures. Painting- Watercolour landscapes. Patchwork- hand stitched cushion covers.

9 Rock Bank Whaley Bridge SK23 7LE

01663 735257

hbrocklehurst@whaleyb.plus.com

From Whaley Bridge turn onto Old Road at the Bike Factory. Rock Bank is the third turning on the left. Park on Old Road and walk up the unmade road. For direct access please ring the venue.



30

CTD

## Peak Potters & Friends

Peak Potters is in Cadster, on Chapel Rd (B5470) between Whaley Bridge and Tunstead Milton, SK23 7EN. [www.peakpotters.co.uk/how-to-find-us](http://www.peakpotters.co.uk/how-to-find-us) gives best directions. Please park in the lay-by on Chapel Road (those with disabilities may park right onto the gravel driveway).

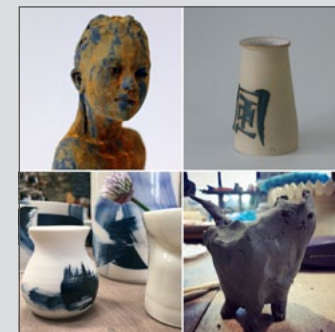
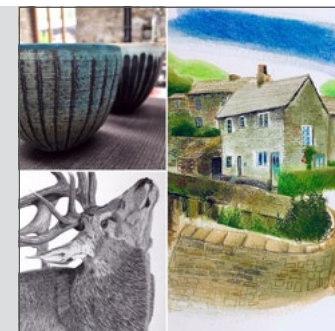
Andrew Grantham throws slipped earthenware and stoneware pots for everyday use and enjoyment. Kate Priestman is a self-taught graphite artist, specialising in drawings of wildlife. Figurative clay sculptor Tricia Harrison, inspired by age, ethnicity and attitude, experiments with textures and metallic finishes. Tony Harrison throws and handbuilds unique stoneware pieces inspired by the Orient, combining simple elegance with functionality. David Lowther's mark making has taken him to the inspiring textures and colours of the Peak District landscape. Helen Jacobs throws simple porcelain pots decorated with expressive freehand brushstrokes of blue.

Cadster Mill, Chapel Road Peak Potters, Whaley Bridge SK23 7EN

07818 833599

Helen@cadstermill.plus.com

<http://www.PeakPotters.co.uk>



31

CTd

## Art & Soul

The venue can be found just beyond the roundabout at Morrison's as you go from Whaley Bridge to Buxton. It is on the right hand side opposite the carpet shop.

Local artists have come together to exhibit their work at the old bakery on Market Street, now known as Textiles@89. 2D and 3D feltwork will be on display as well as ceramics, jewellery and pastel work. Jan Hoyle - fibre painted landscapes Geoff Tarbatt - ceramic birds and quirky architecture Brenda Ford - vibrant enamelled jewellery Carol Wilson - felt art work using naturally-dyed and locally sourced wool Janet Hallam-Elvin - 3D felted birds and animals Studio Pastels - pastel and mixed media

89 Market Street Chapel-en-le-Frith SK23 0JD

01298 815307

purlbag@icloud.com





32

32a - 32h. The Scout Hut, Thornbrook Road, Chapel-en-le-Frith, High Peak SK3 0RH

From A6 take B5470 Market Street, turn left after Morrison's roundabout into Thornbrook Road. From Whaley Bridge turn right into Thornbrook Road. Turn left immediately after the Fire Station and straight ahead into the car park.

a

CD

## Beverley O'Donoghue, Peak Vision Art

Beverley O'Donoghue creates unique paintings which are inspired by the ever changing skies and the rugged terrain of the Peak District and the majestic mountains set within the rich seasonal landscapes of the Scottish Highlands.

07788 75661

[beverley.o-donoghue@sky.com](mailto:beverley.o-donoghue@sky.com)


b

CTPD

## Colette Hazelwood, Peak Vision Arts

Established for 20 years, Chapel en le Frith local Colette Hazelwood designs and makes contemporary jewellery from her shop and studio in Manchester Craft & Design Centre. All her work including recent commissions and her regular ranges can be seen on her website at [www.colettehazelwoodjewellery.co.uk](http://www.colettehazelwoodjewellery.co.uk).

07712 909793

[info@colettehazelwoodjewellery.co.uk](mailto:info@colettehazelwoodjewellery.co.uk)
<http://www.colettehazelwoodjewellery.co.uk>


c

CTD

## Margaret Steeden, Peak Vision Arts

Margaret's current practice of unique textiles utilises the alchemy of the natural chemicals and tannins in leaves, which when heated, transfer their shapes and colours to fabric and paper. She then creates an inspired original range of scarves, cushions, books, wall hangings, pictures and cards.

07495 946175

[masteeden@btinternet.com](mailto:masteeden@btinternet.com)
<http://inspiredtextiles.blogspot.com/>


d

D

## Julia Brownsword, Peak Vision Arts

I create mixed media images which capture the passion ignited by my running and cycling journeys through the landscape of the Peak District. Using computer technology, I translate these images onto fabrics and make a range of products including lampshades, lanterns and cushions.

07974 886475

[julia.brownsword@gmail.com](mailto:julia.brownsword@gmail.com)


32

32a - 32h. The Scout Hut, Thornbrook Road, Chapel-en-le-Frith, High Peak SK3 0RH

From A6 take B5470 Market Street, turn left after Morrison's roundabout into Thornbrook Road. From Whaley Bridge turn right into Thornbrook Road. Turn left immediately after the Fire Station and straight ahead into the car park.

e

CD

## Ingrid Katarina Karlsson, Peak Vision Arts

Ingrid is a narrative artist inspired by memories, experiences and places. Favoured techniques include collage to create rich, colourful textures using mono printing with crystalline watercolour, machine stitching and mark making in other colour media. Words are incorporated adding both texture and another dimension.

07399 405187

[hello@ingridkarlsson.co.uk](mailto:hello@ingridkarlsson.co.uk)
<http://www.ingridkarlsson.co.uk>


f

CTPD

## The Peak Potter, Peak Vision Arts

The Peak Potter is inspired by naturally created patterns, forms and textures and the beautiful landscape of the Peak District. Specialising in hand building techniques, Louise creates unique ceramic pieces influenced by the changing landscape through the seasons, and the animals that share that landscape.

07846 051378

[thepeakpotter@gmail.com](mailto:thepeakpotter@gmail.com)
<http://www.thepeakpotter.com>


g

CTD

## Karl Wood, Peak Vision Arts

Karl Wood is a self taught photographer with an eye for unique compositions. Living in the heart of the stunning Peak District, his work includes beautiful landscapes and amazing animal portraits. He also likes to visit cities for a spot of travel and street photography.

07762 107903

[karlwoodphotography@hotmail.com](mailto:karlwoodphotography@hotmail.com)
<http://karlwoodphotography.com>


Log into our interactive website this year with lots of new features

Find your favourite artists and plan your own trail using your mobile phone or tablet

Filter for venues with Preview Evenings or Disabled Access

Find artists you can commission work from

Discover the artists who teach and offer workshops

View artists slide shows, videos and the latest instagram posts

33

a

Cd

b

CTd

c

CTd

34

CTD

33a. - 33c. Studio with a View. 86 Nunsfield Road, Buxton SK17 7BW

A6 into Buxton, turn left onto Lightwood Rd, then first right onto Nunsfield Road. No 86 is near the top on the left/otherwise from Aldi roundabout take Charles Street, drive under three bridges, this leads to Nunsfield Road.

## Kathryn Watson

Kathryn makes sculptural ceramics for both the garden and home. Her work is hand built using white, red or black clay which is rarely glazed. The clay spirals and twists to create unique organic forms. Work will be displayed in the beautiful garden.

07891 906569

kathrynwatsonceramics@gmail.com

<http://www.kathrynwatson.co.uk>



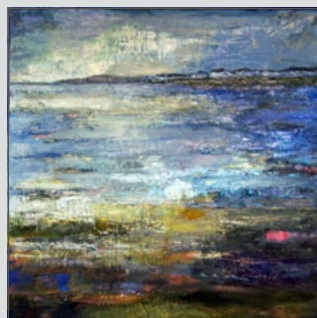
## Sarah Morley

Sarah works expressively in oil and mixed media, often inspired by nature and emotional memory. She produces beautiful landscape, seascapes and abstract pieces. Light, colour, texture are all extremely important. Sarah is working out of Pam Smart's studio for the duration of the weekend.

07946 432818

s.morleyart@gmail.com

<https://www.sarahmorleyart.com/>



## Pam Smart

Pam takes inspiration from the natural and built environment, painting gardens, landscapes and architecture in striking colours. She works in watercolour and acrylic and will be showing a collection of brand new paintings inspired by local architecture. Homemade cakes and tea served in the garden.

01298 70587

pamsmartstudio@gmail.com

<http://www.pamsmart.co.uk>



## Mark Brighton

Mainly mixed media drawings, primarily in colour pencil, but with additional touches of acrylic, gouache and marker pens. My work is a fusion of abstract and figurative styles and encompasses elements of geometric design, stylised natural forms, such as trees, leaves and flowers, and slightly abstracted landscapes.

Isla Fine Art, 4B The Colonnade, Buxton SK17 6AL

07766 543772

mbrighton007@gmail.com

<http://isladirect.co.uk>

We are in central Buxton. From the A6, follow signs to the railway station and continue past the station to a roundabout. Take the first exit and we are about 400 yards on the right in the Cavendish Arcade.



35

TP No

## David Rawlinson

As an artist I like to explore the interaction of colours in the landscape. The abstract nature and unpredictable shapes and colours in my work allows individuals to interpret and make sense of how they experience the world around them.

2d Cavendish Villas Broad Walk Buxton SK17 6JE

07575 554500

dave.rawl@gmail.com

Basement flat at the beginning of Broad Walk opposite the Old Hall Hotel.



36

## Lisa Baraona

My work involves machine stitched drawing. Simple narratives on a small scale that develop from my love of monoprint drawing. Old and recycled fabrics are integral to my work.

Scriveners Books and Bookbinding, 42 High Street, Buxton SK17 6HB

07932 984559

lisa.baraona@gmail.com

<http://www.lisabaraona.com>

From the Market Place in Buxton, where there is ample parking near the Town Hall, or Sainsburys, head 300m south on the A515 away from town.

Saturday and Monday 10 - 5pm. Sunday 12-4pm.



37

CTPd

## Carl Longmate

English landscape painter A plein-air oil painter, preferring to use larger canvas. 'I like to paint what's in front of me' Winner of Derbyshire open 2019.

6 St James Terrace Buxton SK17 6HS

07734 388023

Longmateart@gmail.com

<http://LongmateArt.com>

St James Terrace is behind Buxton Methodist Church on High Street.



38

a

CD

38a - 38c. The Green Man, Hardwick Square South, Hardwick Hall, Buxton, Derbyshire SK17 6PY.

The gallery is situated behind Buxton Museum and Art Gallery which is on Terrace Road. From Terrace Road: Pedestrian access only via footpath next to the museum. From Hardwick Square South: Pedestrian and vehicle access.

## Rebecca Webster - Lajmi

Rebecca has a BA (hons) Fine Art degree, in painting and drawing and a PGCE in Art and Design, in Secondary Education. She creates botanical watercolour paintings which feature, flowers, seed heads, leaves, fruit and berries. Rebecca draws inspiration from lupins, hyacinths, daffodils and fuchsia's.

07794 750906

r.l.webster@hotmail.co.uk

Rebecca may not be present at the preview although her work will be on sale.





38

b

CTPD

c

CPD

38a - 38c. The Green Man, Hardwick Square South, Hardwick Hall, Buxton, Derbyshire SK17 6PY.

The gallery is situated behind Buxton Museum and Art Gallery which is on Terrace Road. From Terrace Road: Pedestrian access only via footpath next to the museum. From Hardwick Square South: Pedestrian and vehicle access.

## Sue Blatherwick

Individual slip-decorated dishes and tiles using traditional techniques with contemporary colours. Designs inspired by natural forms and patterns from around the world. I use the clay as a canvas, making marks which are both controlled and spontaneous. Forms are slab-rolled, moulded or thrown.

07875 282267  
sue.blatherwick1@gmail.com  
<http://www.sueblatherwick.me.uk/>



## Katie Stabana

I preserve nature in latex; this gives my work a unique amber colour. The nature is often foraged and includes wildflowers, weeds, leaves, feathers and shells.

katiestabana@outlook.com  
<http://katiestabana.uk>



39

CTNo

## Sandra Orme & Natasha Braithwaite

Visit Sandra Orme's Sky Studio will be filled with dramatic images of land, sea and sky. Her award winning pastel work alongside Natasha Braithwaite's stunning darkroom produced black and white photographs create an atmospheric show that captures a sense of time and place.

Sandra Orme Sky Studio, 26 Rock Bank, Buxton SK17 9JF  
01298 22538 Sandra@sandraorme.co.uk  
<http://www.sandraorme.com>

Drive out of Buxton on A515/London Road, turn right at junction after hospital (Harpur Hill) continue uphill until Parks Inn, turn right onto Grinlow Road, Rock Bank is second left off Fiddle Street. Parking Grinlow Road or Harpur Hill Road.

40

d

## Jenny Mather

Inspired by the elements of Creation - visible and invisible in landscape, or in a phrase of music or verse; I respond, choosing media and technique which most clearly describe that moment of awe.

The Anglers Rest Cafe, Taggs Knoll, Bamford, also in St John's Parish Church Bamford, Hope Valley S33 0DY  
01433 651795 jenny@jennymather.co.uk <http://jennymather.co.uk>

Coming South on the A6013, The Anglers Rest is on the left. Coming North, take the right hand turn by the village green along Filders Well and then left along Taggs Knoll. Car park available.

10 to 12 and 2 to 4 I'm in the Cafe. 12 to 2 and 4 to 5 in the Church Both venues will be open every day during May; if you would like to meet up with me on non official Open Studio days, please email or phone before the day you want to visit.



41

a

d

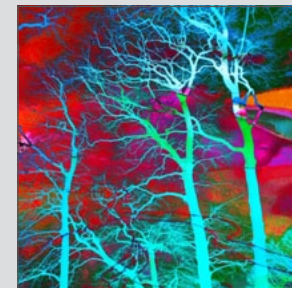
41a - 41b. Green Well Studio, Jaggers Lane, Green Well, Hathersage, Hope Valley S32 1AZ

Jaggers Lane leads uphill from the bottom of Hathersage High Street. Drive past Caggers Lane. The studio is 200 yards further on the right. Jaggers is narrow, so you may need to park further along on the left.

## Mary Elizabeth

I work with paint and new media photography to produce semi-abstract landscapes. I love the emotional effect of colour and how it can both challenge and enhance our perception of the world. My finished works use canvas, aluminium or acrylic surfaces.

07710 791254  
marypateman@hotmail.co.uk



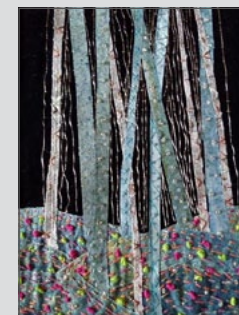
b

Cd

## Meem Bernau

Working with mixed media I create original pictures inspired by both the Derbyshire High Peak and the Northumberland coast. Also unique one-off picture cards, which can be framed or sent as a greeting card.

07588 358265  
meembernau@gmail.com



42

D

## Lesley Platt

Creative art tending towards the abstract. Design embroidery.

Ash House, Main Street, Great Longstone, Bakewell DE45 1TA  
01629 640065  
lesleyplatt@hotmail.com

I live on the main Street in Great Longstone up on the bank next to the White Lion Pub.



43

c

## Lynne Wilkinson

Award winning artist, well known for her expressive animal and floral themes, using a rich palette of vibrant hues creates exciting and evocative paintings

Summerley Hall Studio, Summerley Hall, Summerley Lower Road, Apperknowle, Near Dronfield S18 4BF  
07811 153705  
lynnewilkinson777@yahoo.co.uk  
<http://lynnewilkinson.co.uk>

From Coal Aston take B5056 towards Eckington, turn Right onto Ash Lane before Wards Garden Centre, Turn Right after 500 metres onto Summerley Lower Road, down the hill, bear right at grass triangle and Summerley Hall is on the right.







44

CTD

## Val Hudson

Val Hudson's oil and wax paintings engage with the insubstantial, transient nature of existence as expressed through colour and abstract form, the elements, open spaces and the play of light. They are textural, intimate and poetic and engage with the potential of emptiness and silence.

49 Springfield Rd Barlow, Chesterfield S18 7SQ

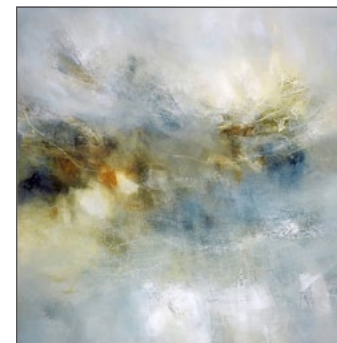
01142 891869

valhudson@fmail.co.uk

<http://www.valhudson.co.uk>

From Sheffield take A621 to Owl Bar Roundabout, take the B6051 to Barlow.

On entering the village take first right. From Chesterfield take the B6051 to Barlow. Drive one mile and take first left after The Tickled Trout Bar Restaurant.



45

45a. - 45c. The Clocktower Business Centre, Hollingwood, Chesterfield S43 2PE

From Chesterfield take A619 towards Staveley. After Ringwood Hall Hotel turn left onto Troughbrook Road. Pass Hollingwood Hub on the left. The Clocktower is the second red brick building on the right. Large Car Park.

a

D

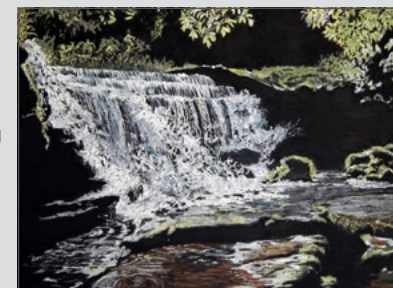
## Lynne Evans

I paint Derbyshire inspired landscapes using pastel on paper or acrylic on canvas. I do studies of plants and animals in pastel and life drawing in charcoal. I take my inspiration from nature.

Studio 27

07729 480580

lynne.evans977@btinternet.com



b

CTD

## Patricia O'Brien

My work is bold and colourful. I fluctuate between the production of figurative and abstract lino cuts, etchings and monoprints to suit all tastes.

Studio 53

07794 040852

pobart4@gmail.com

<http://www.pobart4prints.co.uk>



c

CTD

## Sharon Louise Art

I am a mixed media artist and my art style has been greatly influenced by both my past and present experiences, be it of a personal significance or exploratory adventure. My motivation and drive comes from the many walks I take through the Peak District.

Studio 40

07974 925770

sharonlouiseart@gmail.com





46

Cd

## Patricia Lane

Colourful and textured landscapes in mixed media and acrylics in a semi abstract /impressionist style, on canvas and paper.

2 Elmtan Park Mews, Mansfield Road (B6417) Elmtan S80 4GZ  
07840 246833 mail@bradlane.co.uk  
<http://www.patricialane.co.uk>

Elmtan Park Mews is 1 mile from Elmtan village. From J30-M1 take A616(Newark) to Clowne. At traffic lights at the crossroads, turn right onto B6417, follow the road through the village in 2 miles (approx) turn left into Elmtan Park Mews.

Also open Tues to Sunday, 26th to 31st May 2020, 10am to 5pm.



47

CTPD

## John Connolly

Nationally acclaimed landscape artist in acrylics and mixed media. John is drawn towards the bleakest parts of the country where his stunning use of colour and texture capture a real sense of place to create work with drama and emotion. Studio visits welcome all year

Ormscliffe Studio and Gallery, 16 Langwith Road, Bolsover, S44 6HQ  
07967 316622 John@connollyart.com  
<http://www.connollyart.com>

From Chesterfield drive through Bolsover following the main road past the church on to Langwith Road. No 16 is on the left. Bright Peppermint Green Dorma Bungalow. Studio Gallery is to the rear of the house. Also open 26th and 27th May.



48

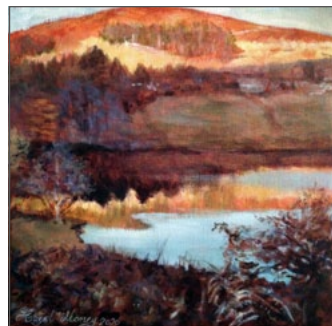
CT

## Hazel Money

Aiming to work out of doors wherever possible, I use a limited palette of acrylics or oils to capture snapshots of Derbyshire's countryside. Working on a small scale, I use this "restriction" to help distil the essence of whatever stops me in my tracks.

116 Clay Lane Clay Cross S45 9AW  
07498 253922  
saffonstudio@hotmail.co.uk  
<http://www.hazelmoney.co.uk>

From the A61, turn at the crossroads for Clay Lane towards Handley, 116 is the last block of houses on the left as you leave the village for open countryside. From Matlock, follow signs for Tansley and Clay Cross.



49

a

CTd

## Liz Wellby

Living and working in Derbyshire is important to fine artist Liz Wellby, providing a significant visual resource for her drawings, print work and sculpture. Liz is an experienced teacher and can be booked to deliver tuition and workshops for individuals, art societies and creative groups.

07979 712633  
enquiries@lizwellby.co.uk  
<http://www.lizwellby.co.uk>



49

b

CTd

49a. - 49c. The Old Tuck Shop, Church Street, Ashover, Chesterfield S45 0EW

From A632 at Kelstedge onto B6036 to Ashover, taking the second left onto Church Street or from A61 at Stretton onto B6036, passing through Woolley Moor into Ashover, turning right onto Church Street.

## Ruth Gray

Derbyshire artist working in acrylics and acrylic inks. Art demonstrator and tutor, you can book her for your art group, school or society. Ruth works to commission painting buildings and heritage scenes. She is currently studying for an MA at the University of Derby.

07941 494954  
ruthgrayimages@hotmail.com  
<http://ruthgrayimages.com>



c

Cd

## Sam Collard

Sam has a specialist interest in photo-lithography and applies her emotive images onto hand-built and hand-thrown clay pieces. Combining this process with her dynamic glazes, you can clearly see the inspiration Sam takes from geology and naturally occurring forms. (Refreshments and delicious cakes available.)

sam@scceramics.co.uk  
<http://www.scceramics.co.uk>



50

a

CD

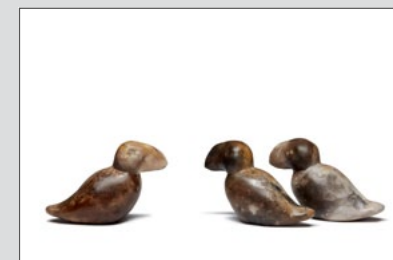
50a. - 50k. Holymoorside Village Hall. 1 Holymoorside Rd, Hall Holymoorside, Nr Chesterfield S42 7DX

A619 Chatsworth Road out of Chesterfield, left at the sign to Holymoorside, Holymoorside Road, travel for 1/2 mile and Village Hall is on the left before the Bulls Head pub. Village accessed also from Chesterfield-Matlock Road. Parking and refreshments.

## Vivienne Sillar

Inspired by the sea, shore and moorland. Hand built birds, seals, fish and forms based on wildlife. Clay is burnished and finished in beeswax these works of art are all unique and beg to be touched. Vivienne exhibits in many galleries from Orkney to Guernsey.

01246 566164 / mob 07814 733789  
vivienesillar@gmail.com  
<http://www.vivienesillarceramics.uk>



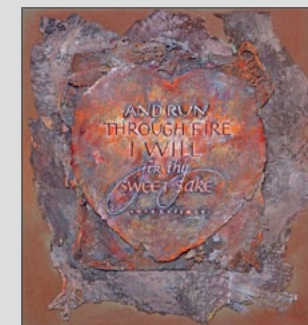
b

Cd

## Elizabeth Forrest

I am a lettering artist and paper-maker. My work is a personal response to text from the varied sources that inspire me and is based on a love of words combined with a passion for colour, texture and pattern.

01246 554026  
elizabethkforrest@btinternet.com  
<http://www.elizabethkforrest.co.uk>



50

c

D

50a. - 50k. Holymoorside Village Hall. 1 Holymoorside Rd, Hall Holymoorside, Nr Chesterfield S42 7DX

A619 Chatsworth Road out of Chesterfield, left at the sign to Holymoorside, Holymoorside Road, travel for 1/2 mile and Village Hall is on the left before the Bulls Head pub. Village accessed also from Chesterfield-Matlock Road. Parking and refreshments.

## Susan Dodd

Inspired by the sea, shore and moorland. Hand built birds, seals, fish and forms based on wildlife. Clay is burnished and finished in beeswax these works of art are all unique and beg to be touched. Vivienne exhibits in many galleries from Orkney to Guernsey.

01246 566164 / mob 07814 733789  
viviennessillar@gmail.com  
<http://www.viviennessillarceramics.uk>



d

D

## Valda Sampson

Nothing has changed. I remain impassioned with paint and fabric and thread. My immediate environment and areas of experience continue to be the inspiration for my work.

01629 653814  
garyvaldasampson@btinternet.com



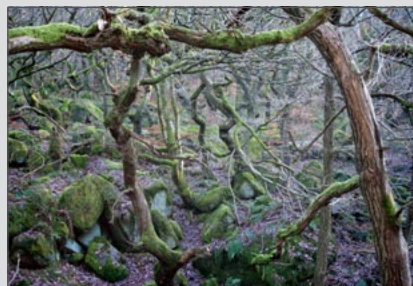
e

D

## Jerry Daniel

My pictorial photographs use minor landscape features as a vehicle for my visual ideas which are influenced by Op Art, Graphic Design and Romanticism. Prints, cards and books

01246 237937  
jerrydaniel@uwclub.net  
<http://www.jerry-daniel.pixels.com>



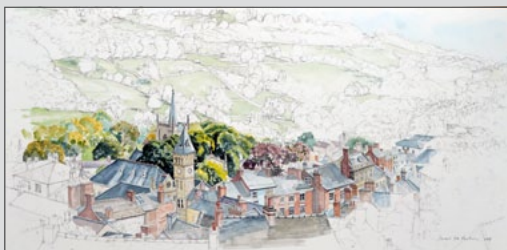
f

CD

## Sarah E A Parkin

Watercolour landscapes of Derbyshire Dales. I aim to paint the 'less seen' vistas and to retain the integrity of the scene whilst responding in a sketched style. Looking at the way the built environment sits within the landscape. Locally made prints, mugs and cards available.

07957 484977  
sarah@sarahparkin.co.uk  
<http://www.sarahparkin.co.uk>



50

g

CD

50a. - 50k. Holymoorside Village Hall. 1 Holymoorside Rd, Hall Holymoorside, Nr Chesterfield S42 7DX

A619 Chatsworth Road out of Chesterfield, left at the sign to Holymoorside, Holymoorside Road, travel for 1/2 mile and Village Hall is on the left before the Bulls Head pub. Village accessed also from Chesterfield-Matlock Road. Parking and refreshments.

## Alison Smith

Alison is passionate about creating intricate designs from sterling and pure silver. Her work is all hand-crafted using fine saw blades and traditional techniques. She mainly takes her inspiration from nature and spends much of her time on commissions, transforming people's ideas into unique pieces.

07929 277504  
alisonsmithsilver@gmail.com



h

D

## Jill Perkins

Happiness in 'HAPPILAND'! When I make, using yarn, fabrics and paper for DoArts, I wear my homemade Happy-Jacket and in a few moments, as if by magic, I arrive at a beautiful, contented place through the process of making Happ-Jackets for you, gifts and cards!

01246 470082  
j111jbp@aol.com



i

CD

## William Vaudin

Influenced by comic book art and classic fiction and using paint, pens and pencils, conventional and digital, William produces images full of intrigue, surprise, detail and sometimes vivid color. These translate well into merchandise such as pin badges, mugs and t-shirts.

01629 760045  
william@vaudin.net



i

TD

## Gwenda Culkin

Mixed media inspired by Japanese Boro cloths; Indian/ Nepalese textiles; folk art including Chilean Arperillas. Vintage fabrics are used to produce new pieces by patching, piecing and layering with added embroidery stitches. "Collecting" plays a big part of my practice - multicultural/ vintage textiles, memorabilia and artefacts.

01623 846895 / 07780435116  
gwendaculkin@yahoo.co.uk





**50****k**

CTD

50a. - 50k. Holymoorside Village Hall. 1 Holymoorside Rd, Hall Holymoorside, Nr Chesterfield S42 7DX

A619 Chatsworth Road out of Chesterfield, left at the sign to Holymoorside, Holymoorside Road, travel for 1/2 mile and Village Hall is on the left before the Bulls Head pub. Village accessed also from Chesterfield-Matlock Road. Parking and refreshments.

## Valerie Dalling

Drawing inspiration from the light, colour, shape and texture of the Derbyshire landscape and beyond, this Peak District artist explores her surroundings with an open mind and a very different perspective, creatively making art from abstract to representational work through her unique painterly style.

07969 324489

valeriedalling@mac.com

<http://www.valeriedalling.com>

**51****a**

Cd

## Kate Pheasey

My mosaics are mainly inspired by my natural surroundings. But, I love to experiment, so my work ranges in style, subject matter, and materials. I also take on commissions which can vary from pet portraits to abstracts, for indoors or outdoors.

01629 640808

k.pheasey@btinternet.com

<http://www.katesmosaics.co.uk>

Saturday opening 11am- 5pm

**b**

Cd

## Eilean Wilding

Mixed media artist, machine and hand stitched decorative textiles. Member of the Society of Designer Craftsmen, Member of Dodeka Designers.

07903 664295

**c**

Cd

## Barbara Coulam

I design and make original decorative and practical glass pieces for the home, using recycled window and bottle glass. Techniques include: fusing, slumping, enamelling. Inspiration for designs comes from natural forms, and architectural patterns. Equipment is recycled, or hand made.

07887 744571

barbara@clerestory.co.uk

<http://www.clerestory.co.uk>

**52****a**

TPd

52a. - 52h. The Willows, Station Road, Darley Dale DE4 2EQ

Coming into Darley Dale on the A6 turn down the B 5057 towards Winstar with The Whitworth Centre and Park on the right. We are the third house down on the left after the shops.

Preview Friday 22nd May 6.00 - 8.00pm

## Jennie Merriman

My starting point is the love of weaving and challenge of developing new contemporary structures involving aspects of the weaving process. New work concentrates on the archiving and shadows of the remains of old mills. Instead of boxing artifacts, I box the weaving process itself.

01629 735883

jennie@thestrwffords.plus.com

<http://www.jenniemerriman.co.uk>

**b**

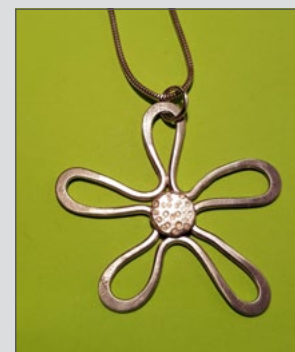
CPd

## Mo Walton

Handcrafted simple and stylish sterling silver jewellery that is wearable for many occasions. Also showing a selection of semi-abstract landscape paintings inspired by Derbyshire's unique atmosphere.

07789 116610

morw@idnet.com

**c**

CPD

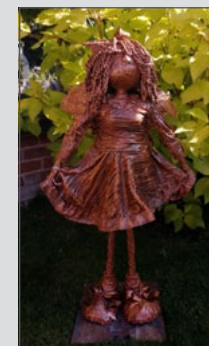
## Karen Williams

Unique handmade sculptures made from recycled fabrics, suitable for both home and garden. I also make wire wrapped faeries.

07870 398996

karen@faerie-tales.co.uk

<http://www.karen-williams.co.uk>

**d**

CTPd

## Peggy Fearn

Small crochet vessels using beautiful and unusual Japanese yarns. Sterling silver jewellery, in some cases, incorporating textile work.

01142 368407

peggyfearne@hotmail.com



52

e

CTPd

f

CTPD

g

CTPD

h

CTPD

52a. - 52h. The Willows, Station Road, Darley Dale DE4 2EQ

Coming into Darley Dale on the A6 turn down the B 5057 towards Winstar with The Whitworth Centre and Park on the right. We are the third house down on the left after the shops.

Preview Friday 22nd May 6.00 – 8.00pm

## Anne Menary

I work by hand creating paper and textile collages which illustrate an 'other worldly' take on life. I use, mostly, off-cuts and scraps of fabric along with a variety of traditional hand stitches to create my collages which are displayed as pictures, postcards and wall-hangings.

07752 855034

anne@annemenary.com

<http://www.annemenary.com>



## Olinda Everett

I hand build ceramic forms fired to high temperatures to produce both sculpture and functional pots; the former tend to comment on contemporary events and the latter refer to the natural world, the geometry of nature and are intended to contain food, plants or shells.

07971 240565

olindaeverett@gmail.com

<http://www.olindaeverettceramics.weebly.com>



## Kath Hollis & Pete Singer

Kath creates hand-built ceramics, specialising in hares and other wildlife figures. Her artwork ranges from oils and pastels to black and white pen and ink drawings. Pete's pots are made for food, thrown mainly in stoneware clays, simply glazed in shades of blue and green.

07717 672901

kathhollis042@gmail.com



## Annie Nicoll

Both my mosaics and textiles are interpretations of my drawings and designs. The mosaics include ceramic tile, glass and found items and the textiles are a combination of appliqué and embroidery. My work varies from exhibition pieces to decorative items.

01332 670452

annienicoll@yahoo.com

<http://annienicoll.com>



53

Cd

## Beth Sharliss

Individual and wearable pieces of art inspired jewellery using freshwater pearls, semi precious stones and recycled materials. Modern and vintage inspired collections. Bespoke pieces can be commissioned to suit an outfit or an occasion.

287 Chesterfield Road Forest Lodge Matlock DE4 5LE

07799 603154

sharon.shoeshinesharon.pepper@gmail.com

<http://Bethsharlissjewellery.com>

Last house, left hand side leaving Matlock on Chesterfield Rd before new housing estate and golf club.



54

CD

## Miranda Griffiths

Miranda specialises in kiln formed fused glass. Her work includes landscapes and seascapes, being particularly inspired by nature and local features, and personalised individual pieces. Commissions can be undertaken and Miranda works closely with her clients in the planning and design of their pieces.

22, Edge Road Sunningdale Matlock DE4 3NH

07714 291214

mirandag311@icloud.com

Go up Bank Road from Crown Square in the centre of Matlock and take the second turning on the left. Number 22 is on the right hand side on the unmade portion of the road.



55

a

CTPd

55a. - 55b. Ivy Cottage, Upper Lumsdale, Matlock DE4 5LB

Leaving Matlock on A632 Chesterfield Rd, pass the Duke of Wellington pub on left, continue on and take the first turning on the right into Upper Lumsdale. Park in the layby opposite Highfields School. Ivy Cottage is on the left.

## Sarah Burgess

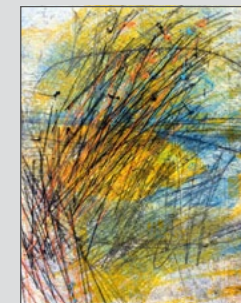
The environment informs my work, fragile landscapes and climate extremes stimulate ideas. Complex printed surfaces are layered with transparency and marked with stitch; working with monotype on paper and fabric the drawn mark develops its own voice as I respond to incident and uncertainty.

01629 55317

sarahburgess6@gmail.com

<http://www.sarah-burgess.com>

Other times by appointment.



b

Cd

## Stephen Baillie

Garden sculptures made out of recycled parts.

07450 608151

mcbailie@hotmail.co.uk





56

Cd

## Ann Bates

Individual hand built vessels and tiles made from stoneware and porcelain clays. The vessels are built in layers using coloured clays to suggest landscape whilst the tiles are textured or patterned with natural materials and symbols.

Oak Cottage, Lumsdale Road, Matlock DE4 5LB  
01629 55429  
ann@annbates.co.uk  
<http://www.annbates.co.uk>

From Matlock town centre A615 Matlock Green, left at crossroads A632, Chesterfield Road. After 1 mile turn right Lumsdale Road, pass Slack's garage, Highfields school and follow road to junction with Asker lane. Take left fork and follow event arrow.



57

a

CD

## Thomas Petit

Thomas Petit Glass has exhibited in the UK, Europe, New Zealand, Australia and the USA. Thomas draws inspiration for many of his designs from nature, land and seascapes. Thomas makes an assortment of stoppered bottles, bowls and vessels, as well as paperweights.

07817 151826  
thomaspetitglass@yahoo.co.uk  
<http://www.thomaspetitglass.com>



b

CTD

## Jonathan Abbott

Beautiful, unique hand blown glass created using recycled materials. Each piece is hand made and finished using traditional skills - techniques unchanged through centuries of glass making. Come down and watch how it's done!

07964 710880  
lumsdaleglass@gmail.com



c

CTd

## David Turner

Traditionally forged contemporary sculpture and traditional blacksmithing.

07792 872978  
oliveblacksmith@yahoo.co.uk  
<http://www.davetheblacksmith.co.uk>



58

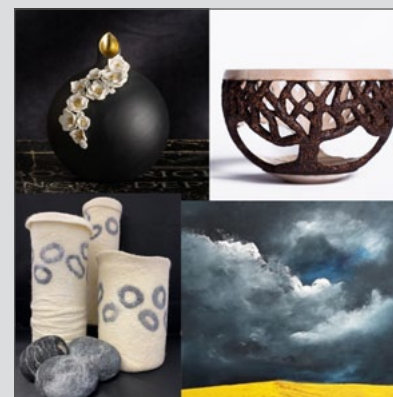
CTD

## Tansley Village Hall

Through Matlock toward Alfreton, A615. 1.5ml out take left turn, Church Street. Alfreton direction, A615, in Tansley turn right into Church Street after The Tavern PH. Venue on Right, car park to front. Do not use post code for SatNav. 11-5 each day.

Aquaramics Hand built ceramics [www.aquaceramics.co.uk](http://www.aquaceramics.co.uk) Tel: 07875 535896 email: [aquaramics@hotmail.co.uk](mailto:aquaramics@hotmail.co.uk) The Corner Studio Expansive skies and sea paintings Fb@thecornerstudioarts email: [sj.cooper@live.co.uk](mailto:sj.cooper@live.co.uk) Lisa Ellul Botanically inspired ceramics [www.ellulceramics.com](http://www.ellulceramics.com) Tel: 07746 599705 email: [lisa@ellulceramics.com](mailto:lisa@ellulceramics.com) Oksana Holbrook Hooked rag rugs Fb@oksanaholbrook Tel: 07990 973819 email: [oksanaholbrook23@gmail.com](mailto:oksanaholbrook23@gmail.com) Deborah Hook Carved Glass [www.deborahhook.co.uk](http://www.deborahhook.co.uk) Tel: 01623 553500 email: [deborah@deborahhook.co.uk](mailto:deborah@deborahhook.co.uk) Michelle Gillam-Hull Kiln Glass [www.gillamglass.co.uk](http://www.gillamglass.co.uk) Tel: 07549 066971 email: [michelle.gillamhull@googlemail.com](mailto:michelle.gillamhull@googlemail.com) Christine Jones Lino print and collagraph. [Inst@printnewt](mailto:Inst@printnewt) email: [newt99uk@hotmail.com](mailto:newt99uk@hotmail.com) Jenny Neale Images Photography [www.Jennynealeimages.com](http://www.Jennynealeimages.com) Tel: 01629 534721 email: [jennynealeimages@gmail.com](mailto:jennynealeimages@gmail.com) Jillian Riley Porcelain apothecary, poison and scientific vessels [www.jillianriley.co.uk](http://www.jillianriley.co.uk) email: [ceramics@jillianriley.co.uk](mailto:ceramics@jillianriley.co.uk) Jude Shore Design Contemporary felt maker Fb@judeshoredesign Tel: 07798 843072 Email: [judeshore@sky.com](mailto:judeshore@sky.com) The Soap Caddy Artisan bathing products Fb@thesoapcaddy [Inst@the\\_soap\\_caddy](mailto:Inst@the_soap_caddy) Why Not Wood Unique wood turned art. [www.whynotwood.co.uk](http://www.whynotwood.co.uk) Tel: 07825 251471 [whynotwood2014@gmail.com](mailto:whynotwood2014@gmail.com) Fb@WhyNotWood [Inst@WhyNotWood](mailto:Inst@WhyNotWood)

Tansley Village Hall, Church Street, Tansley DE4 5FH



59

CTD

## Eddie Hallam

Each sculpture is designed and created by Eddie Hallam who combines his artistic talent with his extensive experience of wildlife watching in order to capture the essence of his subjects in life-size sculptural form. His sculptures are unique, finished in bronze and individually patinated.

Greenways Farm, Riber Village, Matlock DE4 5JU  
01629 583108  
eddiehallam@wildlifesculptures.co.uk  
<http://www.wildlifesculptures.co.uk>

Leave Matlock on A615 to Tansley and follow the AA exhibition signs to Riber. The gallery is on your left in Riber village.  
10.30am - 5pm 23rd May - 7th June 2020.



60

CT No

## Arts at The Folly

Best approached from the A615 (from Matlock or Alfreton) or the A6 at Whatstandwell (the Cromford to Lea road may still be closed). Once in Lea you will find The Folly situated between The Jug and Glass pub and Lea Green. Just look for our banner! We will also be open 1-4pm 26th- 29th May plus 10am to 5pm on 30th May. Some workshops will be available in the weekday mornings - check [www.facebook.com/artsatthefolly](http://www.facebook.com/artsatthefolly) for details.

A group of six local artists/artisans. "Animal artwork including felted pictures and animals painted onto vintage maps." Frances Daunt "Stunning wildlife sculptures hand-built from stoneware clays. Inspired by a passion for British wildlife." Lynn Hazel "Unique, quirky pictures created from natural materials. Guaranteed to make you smile!" Kate Beinder "Beautiful stitched textile art using recycled fabric, featuring gardens and landscapes." Janet Humphrey "Recycled materials artist creating wearable, decorative art inspired by Derbyshire's industrial past." Zoe Adamson "Unique and rustic items of furniture lovingly created from pallet wood/reclaimed timber." Stuart Jones.

The Folly, Main Road, Lea DE4 5GJ  
01629 534279  
francesdaunt@btinternet.com  
<https://www.facebook.com/artsatthefolly/>



61

C

## Donka Stone

Wild flowers are the main focus of my landscapes. They are vibrant in colour and subject and my inspiration comes from the beautiful countryside of Derbyshire. Using oils with a palette knife helps to bring the flowers to life and enhances the viewing experience.

New Bath Hotel and Spa, New Bath Road, Matlock Bath DE4 3PX  
07979 974352  
donkastoneart@gmail.com

From Derby follow the A6, continue past Cromford, and the hotel is on the left hand side. From Matlock, pass through Matlock Bath, continue past sign to Gulliver's Kingdom and the hotel is on the right hand side. The hotel is also open every day for the public to view the paintings.



62

a

Cd

62a. - 62c. South Lawn Studio, 30. Hindersitch Lane, Whatstandwell, Matlock DE4 5EJ

A6 Whatstandwell Bridge. Turn past 'Family Tree' towards Crich Take second sharp left turn onto Shaws Hill. Follow road to Hindersitch Lane Turn right to DE4 5EJ. From Crich Tramway Museum, Take Carr Lane opposite Cliff Pub down to Hindersitch Lane.

## David Hunns

David is fascinated with the Derbyshire landscape. The result is a series of oil and watercolour images which capture panoramic views and rocky crags, topped with atmospheric skies. His work is an emotional response to what he experiences while exploring the local environment.

07835 886595  
djhunns@gmail.com



b

CTD

## Steph Jansen

Steph is a wet felt creating stunning, painterly landscapes. Her work weds her love of walking in the Derbyshire countryside and travels in her camper van, with her passion for playing with the vibrant colours and textures of natural and dyed wool tops and silks.

07791 970019  
steph@jansens.co.uk  
<http://www.stephjansenfinefelt.co.uk>



c

CTD

## Jo Hassan

Jo combines veg-tanned leather, burnished copper, vintage textiles and salvaged finds to create unique mixed-media pictures, jewellery and gifts. Her intricate "Tanglefrost" creations are rooted in our shared crafting heritage and traditional needlework skills, whispering tales of wholeness and that all are precious and loved.

07590 433866  
jo@tanglefrost.com  
<http://www.tanglefrost.com>



63

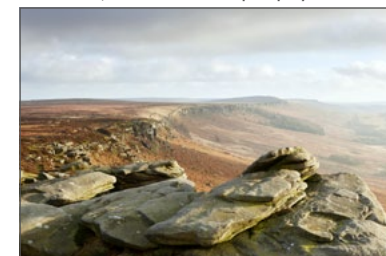
CTPD

## Ian Daisley

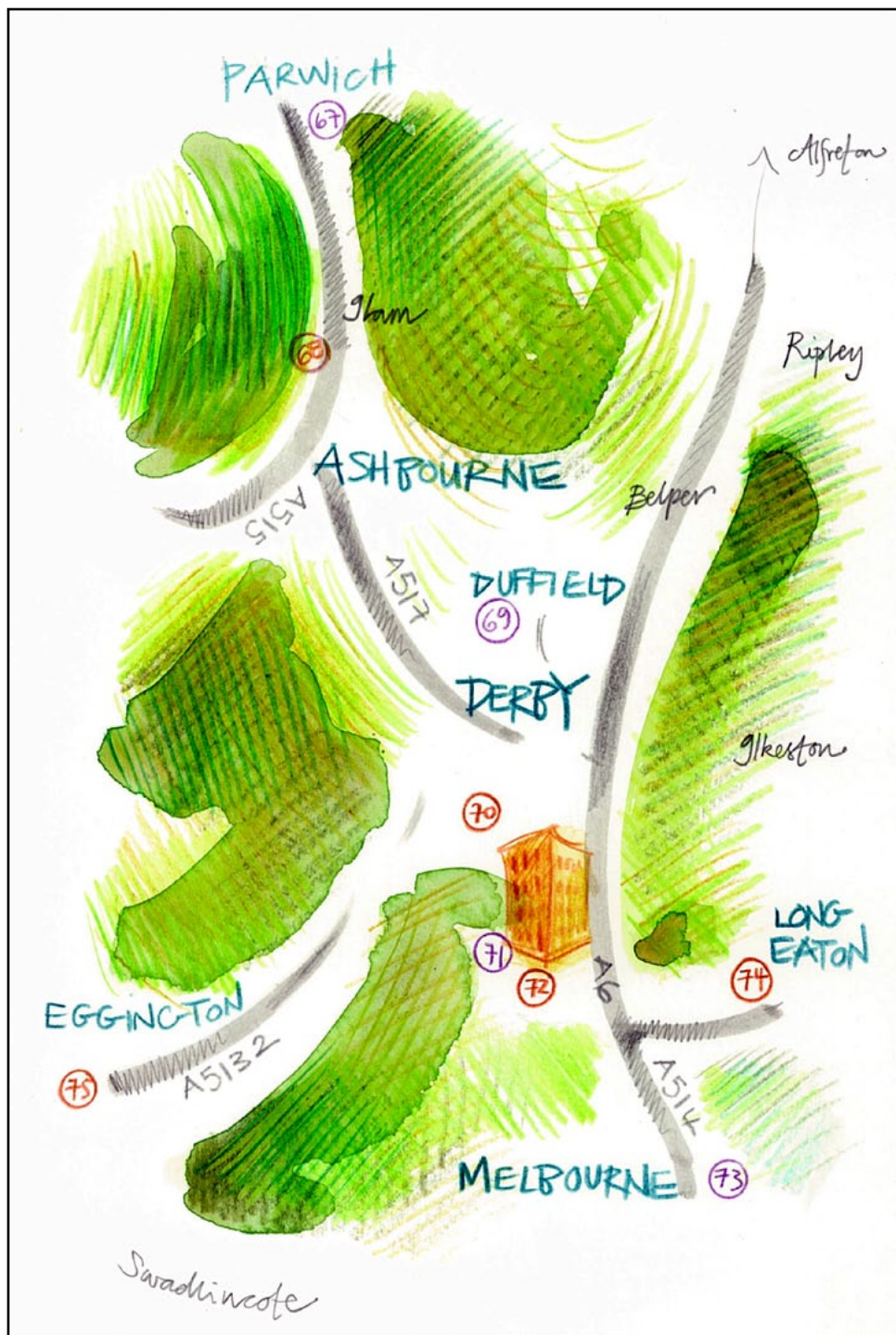
A range of beautiful fine art prints of Derbyshire, the Peak District, other areas of the UK, and Croatia. Work is principally available in the form of signed limited editions, either framed or mounted, all produced in our studio to a very high standard.

Unit 2D, Via Gellia Mill Bonsall DE4 2AJ  
07918 687624  
enquiries@highstonegallery.co.uk  
<http://www.highstonegallery.co.uk>

Via Gellia Mills are located on the left hand side of the A5012, travelling from Cromford. Plenty of free parking on site. Unit 2D is on the ground floor of the brick built mill.







64

64a. - 62d. Pitch Blue. Newbridge Works, Coldwell Street, Wirksworth DE4 4FB.

From the centre of Wirksworth (B5023) turn on to Coldwell Street (B5035) and turn left into the entrance of Newbridge Works just before the bridge. Look for the blue painted entrance to Pitch Blue, please note there are 8 steps up to the entrance.

a

## Gaynor Lewis

Wildlife and fantasy artist, Gaynor Lewis chooses the medium she feels will work best to capture those special moments in time of the stunning wildlife found in nature or to portray the wonders of a magical world.

07736 549235

gaynorlewisartist@yahoo.com

<http://www.gaynorlewis.com>



b

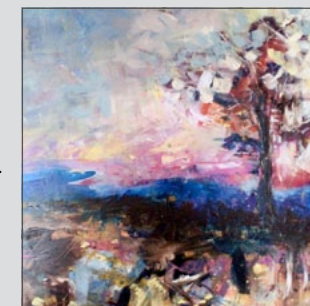
## Joanne Polmear

My work is inspired by familiar landscapes around me from the Yorkshire Dales of my childhood to the Derbyshire Peaks and Staffordshire Moorlands where I now live. I try to capture a sense of place, the feel of the air, the touch of the weather.

07484 899650

jopolmear@icloud.com

<http://www.jopolmear.com>



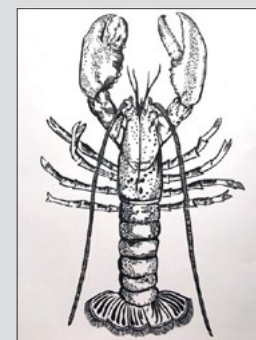
c

## Charlotte Smith

Charlotte Smith is a traditional printmaker, that enjoys using bold and bright colours. She works in her Derbyshire studio where she prints using an old book press. She has a variety of interest in themes, but mainly works with nature, botanicals and random household objects.

07702 240034

smithsprints@gmail.com



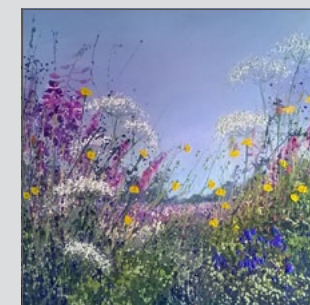
d

## Lynn Smith

Lynn paints in acrylic and watercolours. She is inspired by the local countryside, nature and the changing seasons. Her work is lively and expressive through the use of colour and texture.

07756 544675

lynn.smith60@icloud.com



65

CPD

## Barbara & Graham Dougan

Barbara makes free standing fused glass pictures depicting landscapes, gardens, dragon flies and flowers. she also makes coasters, wall hangings, candle holders and dishes. Graham uses porcelain, stoneware and earthenware to create contemporary works including functional vessels, wall hangings, sculptures and garden containers

Cinder Lodge, Cinder Lane, Wirksworth, Matlock DE4 4BL

07932 695140

dougan1946@gmail.com

<http://www.glassandceramics.co.uk>

From Derby/Duffield take the B5023 towards Wirksworth, at the approach to Wirksworth take the first left and turn into Cinder Lane. From Matlock/Cromford take the B5023, pass through Wirksworth centre, Cinder Lane on right after Adam Bedes Garage on left.



66

a

CTD

66a. - 66b Wirksworth Heritage Centre, 31 St. John's Street, Wirksworth, Matlock DE4 4DS

Wirksworth Heritage Centre is located in the centre of Wirksworth on the main street - the B5023. Parking is available 2 minutes away in the market place. Time-limited parking is available on St. John's Street near the Centre itself. A free car park can be found nearby on Canterbury Road.

## Paula Hallam

My paintings are concerned with trying to capture the "completeness" I find within a landscape, change of light or the comfort that comes from the memories of places. I mainly work with acrylics, using complex layers of translucent paint to arrive at a finish piece.

07511 950806

paulahallamart@gmail.com

<https://www.paulahallam.co.uk/>



b

TD

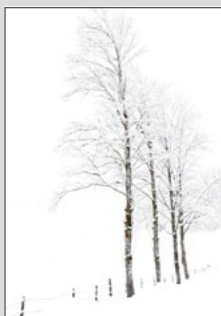
## Phil Searle

My photographic styles range from fine art and landscapes to abstracts, black and white and street photography. My inspirations come from many sources, particularly from the world around me which I try to capture in unique ways.

07968 025113

philsearlephotographer@hotmail.co.uk

<http://philsearlephotographer.co.uk>



67

d

## Ruby Hickmott

Expressive land/seascape paintings and sketches in oils, watercolours, ink and charcoal.

4 Church Walk Parwich Nr Ashbourne DE6 1QA

01335 390323

ruby.hickmott@gmail.com

<http://www.rubyhickmottart.co.uk>

From A515 Ashbourne/Buxton road take the B5056 - 2 miles north of Ashbourne (signed to Bakewell) After 3 miles take a left turn to Parwich. In Parwich turn right into Creamery Lane and bear left onto Church Walk.



68

CTD

## Peak District Artisans

From Ilam go up the hill (sat nav takes you half way up) continue until the hill levels out and you spot the banners on the entrance down to the farm. Park in first yard.

The Haybarn at Beechenhill Farm will welcome 12 Peak District Artisans. Once again they have the Charity Cafe with cake and coffee. Folk Artist Sue Prince with her medieval storytelling in Egg Tempera : rich and colourful landscapes in pastel from Steve Elliott : landscape artist Maggie Robinson has a strong connection with music, inspiring her paintings : Mark Langley's meticulous style in coloured pencils and oil paints is of architecture, landscape and animals : Tim Rose works in watercolours and oils as he observes the light in portraits and on architecture : Jewellery inspired by the Peaks from Karin Sheldon : woodturner Roger Waterhouse will display bowls and other useful pieces : Ray Sylvester is well known for his delightful boxes : ceramic pieces from Joanna Bunbury inspired by a deep connection with the natural world : wheel thrown stoneware by Gary Sampson is for use in the home : Newfields Gallery brings the best in hand-carved wood and detailed ceramic : Rachel Evans Wheatcroft Willow makes beautiful baskets and woven containers. Directions to Beechenhill Farm at [www.beechenhill.co.uk](http://www.beechenhill.co.uk)

Beechenhill Farm, Ilam, Ashbourne DE6 2BD

01335 310274

karin.sheldonoriginals@gmail.com

<http://www.peakdistrictartisans.co.uk>





69

CTd

## Colin Halliday

I paint with pure oil paint and produce thick surfaces. My main subject matter is landscape, Derbyshire, Lake District, Cornwall. I paint "en plein air" and also paint still lifes. I have been painting for 35 years and have been professional for 20 years.

7 Cumberhills Road Duffield, DE56 4HA

07759 595294

challiday1964@btinternet.com

<http://www.colinhallidayart.co.uk>

From North A6 into Duffield take right at CO-OP onto Wirksworth Road at end take left and first right onto Cumberhills Road. From South A6 into Duffield take left at lights onto Broadway at top take left onto Cumberhills Road.



70

a

CTd

70a. - 70e. Banks Mill Studios, 71, Bridge Street, Derby DE1 3LB

West of Derby city centre, located on the corner of Brook and Bridge Street - 10 minutes' walk from the Intu and a few miles from Derby train and bus station with easy access from the A38, A50 & A52.

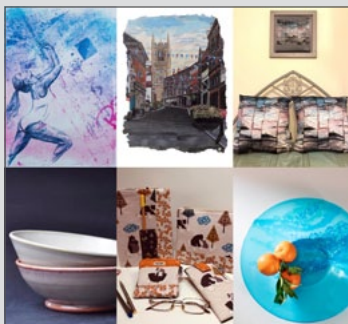
## Banks Mill Studios

Visit Banks Mill to meet and buy from a diverse range of artists and makers in their working studios and view an exhibition of artwork around the building (10 artists in total at this venue). • Curious Inky Me - Fine Art Printmaker & Jewellery • Kirstie Adamson - Magazine Collage Artist • Mr Ps Pots - Pottery and Fine Artist • Sazzi Creations - Handcrafted Homeware, Cards and Accessories • Stevie Davies - Contemporary Fused Glass • Susan Bedford - Mixed Media Artist

01332 597866

banksmill@derby.ac.uk

<http://www.banksmill.co.uk/darts2020>



b

c

## Zaza Lewis

I combine card-cutting techniques with textiles to create images with a 3D effect. My inspirations are varied, from architecture to plants or a beautiful scenery.

07779 160793

zazalewis44@gmail.com

<http://www.artizaza.com>



70

c

CTd

70a. - 70e. Banks Mill Studios, 71, Bridge Street, Derby DE1 3LB

West of Derby city centre, located on the corner of Brook and Bridge Street - 10 minutes' walk from the Intu and a few miles from Derby train and bus station with easy access from the A38, A50 & A52.

## Sarah Perkins

Sarah specialises in modern animal art and pet portraiture. Using acrylic paint both densely and with layered washes of colour in a lively unique style on canvas. Original artworks, along with prints and various homewares are available. Commissions are also taken of beloved pets.

07891 338081

sarahperkinsart@hotmail.com

<https://www.sarahperkinsart.co.uk>



d

CTP

## Minoan Mosaic Studio

Freshly established mosaic studio part of The British Association for Modern Mosaic with a highly diversified portfolio of mosaic techniques and methodologies. Our expertise allows us to offer you tailored mosaic experiences using vitreous, ceramic, stained glass and marble focusing on ancient and modern art.

07929 397058

info@minoanmosaic.com

<https://www.minoanmosaic.com/>



e

c

## Anisha Parmar

Anisha Parmar London is a luxury fashion: jewellery and accessories brand that is inspired by the melting pot of multi-cultural London: A hub for diversity and cultural cross overs with true British culture. We make jewellery for the bold, confident and #BADASS woman.

hello@anishaparmar.com

<http://www.anishaparmar.com>



71

CTd

## Emma Jane Hough

Mixed media abstract painter influenced by landscapes and day to day life.

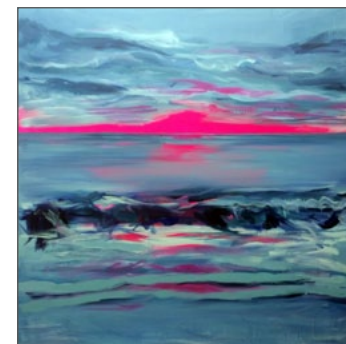
Emma Jane Hough Studio, 44 Friar Gate, Derby DE1 1DA

07921 453592

info@emmajanehough.com

<http://www.emmajanehough.com>

Free parking available through the archway behind 44 Chevin homes. Studio located in the corner of the car park.



72

a

Td

72a. - 72c. Furthest From The Sea. Music, Comedy and Arts CIC. 1, The Strand Arcade, Derby DE1 1BQ

The Strand Arcade can be reached by car from The Strand, Derby; but preferably on foot, either from here, or from Saddler Gate. The ground floor venue, with disabled access, is in the centre of Derby, with plentiful parking nearby.

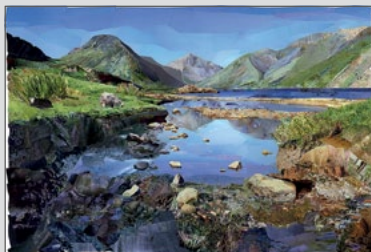
## Giles Davies

Collage landscapes with the richness of a photograph, yet created from a blend of many incongruous magazine fragments. Full of rich colour and fine detail, cuttings are combined in a surreal and playful way to create believable landscapes which reveal hidden secrets close-up.

07712 866745

[giles@gilesdavieslandscapes.co.uk](mailto:giles@gilesdavieslandscapes.co.uk)

<http://www.gilesdavieslandscapes.co.uk>



b

CTD

## Maisie-Jane Baker

Contemporary, mixed media illustrations and utopian landscapes bursting with technicolour energy and drenched in candy coated hues. Inspired by urban art and contemporary graphic design, my work merges the abstract with the figurative, seeking to balance juxtaposing elements with an archive of textures and patterns.

07810 100007

[maisiejanebaker@gmail.com](mailto:maisiejanebaker@gmail.com)

<http://www.maisiebakerdesigns.co.uk>



c

d

## Reuben Hawthorn

Reuben specialises in portrait painting ranging from the finely detailed to the impressionistic. He uses both brush and knife-work to achieve a textured and lifelike finish to each of his paintings; aiming to convey a unique sense of character through his choice of medium.

07955 653811

[reuben\\_hawthorn@hotmail.co.uk](mailto:reuben_hawthorn@hotmail.co.uk)



73

CTD

## Leigh Wood

Metal Manipulation makes industrial style lighting, furniture and sculptures with a unique style and design. Award winning Metal Manipulation is based on the Derbyshire, Leicestershire border and specialises in metal handcrafted designs for the garden and home.

The Ferrers Centre for Arts and Crafts, Staunton Harold, Nr Melbourne LE65 1RU

07921 146699 [Sales@metalmanipulation.com](mailto:Sales@metalmanipulation.com)

<http://www.metalmanipulation.co.uk>

Metal Manipulation is on the Derbyshire Border and can be found easily from the A50 following signs for Melbourne and Calke Abbey. We are just a stone throw's away from Calke and nestled in the picturesque grounds of Staunton Harold. We will be also open Thursday and Friday 11am-4pm.



74

CTd

## Long Eaton Art Room

Exit M1/A52 at J25, follow signs to Long Eaton. Turn right at first roundabout, left at second onto Derby Road (A6005) signposted Beeston/Long Eaton. Turn right onto Lime Grove, and we are on the left just before the cemetery.

Visit Long Eaton Art Room to meet and buy from a diverse range of six resident artists who are opening up their studio spaces over the bank holiday weekend. Minifi - Printmaker ([www.facebook.com/minifisoddities](http://www.facebook.com/minifisoddities)) JD Surface Art - Mixed Media artist ([www.facebook.com/Johannedaniellesurfaceart](http://www.facebook.com/Johannedaniellesurfaceart)) Kim Fowler - Illustration ([www.kimfowlerillustration.co.uk](http://www.kimfowlerillustration.co.uk) & [www.facebook.com/kimfowler.illustration](http://www.facebook.com/kimfowler.illustration)) Ray Gumbley - Photography ([www.raygumbleyphotography.com](http://www.raygumbleyphotography.com) & [www.facebook.com/ray.gumbley](http://www.facebook.com/ray.gumbley)) Mary Graham - Jewellery/ceramics (email: [mary.graham@newgramit.plus.com](mailto:mary.graham@newgramit.plus.com)) David William Sampson - Ceramics ([www.davidwilliamsampson.com](http://www.davidwilliamsampson.com) & [www.facebook.com/davidwilliamsampson](http://www.facebook.com/davidwilliamsampson)).

29/31 Lime Grove Long, Eaton Art Room, Long Eaton, Derbyshire NG10 4LD

0115 9461661

[info@longeatonartroom.co.uk](mailto:info@longeatonartroom.co.uk)

<http://www.longeatonartroom.co.uk>



75

a

CTD

75a. - 75m. Egginton Memorial Hall, 23 Church Road, Egginton DE65 6HP

Travel south past Derby on A38, after passing under the A50 (Toyota Island) take 1st left after petrol station. T junction turn right A5132, then take 2nd left into Egginton, the Hall is on the left on the main road.

## Diane Daley

I create mosaic using fine china for a delicate and pretty effect. Using the patterns, colours and shapes I let the china guide me as what it should be in it's next transition of life. Each mosaic I create is challenging but also unique.

07887 817439

[chinapetalsmosaic@gmail.com](mailto:chinapetalsmosaic@gmail.com)

<http://www.chinapetals.co.uk>



b

c

## Kate Westwood

I paint contemporary, atmospheric abstracts and landscapes, mostly using acrylics and pastels. I love the juxtaposition of blended, elegant textures alongside solid, harsh lines. I also always try to incorporate an element of light and dark extremes to create a dramatic aesthetic.

07738 614081

[kate\\_westwood1@hotmail.com](mailto:kate_westwood1@hotmail.com)

<https://www.katewestwood.com>





75

75a. - 75m. Egginton Memorial Hall, 23 Church Road, Egginton DE65 6HP

Travel south past Derby on A38, after passing under the A50 (Toyota Island) take 1st left after petrol station. T junction turn right A5132, then take 2nd left into Egginton, the Hall is on the left on the main road.

c

D

## Helen Leaf

Carved antler, with wood, silver, and gold leaf to create sculptures, containers and jewellery, and cast natural objects in silver and bronze. The theme that binds all together is the Wildwood - the deer, the trees, and our connection with nature.

mail@helenleafdesigns.com  
http://www.helenleafdesigns.com



d

CD

## Lesley Nason

Porcelain clay is used to create contemporary wall art, decorative vessels and jewellery inspired by the Derbyshire countryside. The images are firstly drawn freehand into the soft clay with texture, then resist, oxide and crackle glaze applied selectively to capture the beauty of the landscape.

07977 934624  
lesley.nason@btopenworld.com  
http://www.lesleynasonceramics.co.uk



e

CTD

## Terry Nason

A range of hand-thrown functional stoneware, decorated with multi layered glazes, fired in an electric kiln. Each of the resulting bowls, plates, jugs, mugs and vases are unique and reflect the beauty of the ever changing colours of the Derbyshire landscape.

07703 656460  
terrbynason@btopenworld.com



f

CD

## Sheila Read

Jewellery inspired by the great ocean liners, catching a small snap shot of tiny parts then developing this into crisp clean lines using precious metals. These lines are often softened with the addition of wood from a sustainable source.

07740 927943  
sheila@sheilareadjewellery.co.uk  
http://www.sheilareadjewellery.com



75

75a. - 75m. Egginton Memorial Hall, 23 Church Road, Egginton DE65 6HP

Travel south past Derby on A38, after passing under the A50 (Toyota Island) take 1st left after petrol station. T junction turn right A5132, then take 2nd left into Egginton, the Hall is on the left on the main road.

g

CTd

## Caroline McFarlane

Primarily a portrait artist, I also dabble in landscape. Mediums used include oils, pastels, watercolour and mixed media. Giclee prints and greetings cards available.

0115 9443411  
caroline@carolinesart.co.uk  
http://www.carolinesart.co.uk



h

CTD

## Dawn Feeney

Jewellery and Copper Embossing.

07432 519771  
dawnmichelleburb@hotmail.co.uk  
http://www.dawnfeeneyjewellery.co.uk



i

CTD

## Sylvia Glover

As well as my signature 'miniatures', I make practical, usable pots with softly curving forms and rich, tactile stoneware glazes that I develop myself. The vessels are satisfying to hold and use, and easy to live with - even dishwasher and microwave-proof.

07743 127642  
sylvia@sylvia Glover.co.uk  
http://sylvia Glover.co.uk



i

D

## Sue Trevor

I create highly embroidered jewel like quilted work, sometimes three dimensional objects from the world around me or from my imagination often taking inspiration from my own garden and the botanical world in general.

Susan.Trevor@gewgaws.co.uk  
https://folksy.com/shops/SueTrevor



75a. - 75m. Egginton Memorial Hall, 23 Church Road, Egginton DE65 6HP

Travel south past Derby on A38, after passing under the A50 (Toyota Island) take 1st left after petrol station. T junction turn right A5132, then take 2nd left into Egginton, the Hall is on the left on the main road.

## Judith Brown

I make jewellery with fine silver wire, glass beads and hand stitching techniques developed following my degree in embroidery. My collections include Fern and Leaf, with details inspired by the delicate wildflowers and foliage and Geometric, a contemporary range, inspired by Art Deco design.

07733 026077

[judith@judithbrownjewellery.co.uk](mailto:judith@judithbrownjewellery.co.uk)

<http://www.judithbrownjewellery.co.uk>



## Niki Walker

I create fused glass pieces ranging from coasters and trinkets to large platters all focused on shimmering texture. New for 2020, I have a new range of landscape I pieces with fused wire bikes and affordable sentimental tokens and trinkets.

07854 807968

[niki\\_artist@hotmail.com](mailto:niki_artist@hotmail.com)

<http://www.nikiwalkertofusedglass.co.uk>



## Gael Cherry & Mark Smith

Gael's work is based on botanical themed ceramics. I'm a keen gardener & collect interesting seed heads and flower stems which I impress into clay slabs. Pieces are decorated using coloured slips, oxides & glazes. Marks work is nautical & fantastical shipwrecks.

01889 591311

[gael.cherry123@gmail.com](mailto:gael.cherry123@gmail.com)



Located within the Derwent Valley Mills World Heritage village of Cromford.



The Market Place  
Cromford  
Derbyshire  
DE4 3RE  
<http://cromfordstudioandgallery.weebly.com>  
Tele: 01629 826434

## Cromford Studio and Gallery

Displaying the work of local artists and makers since 2013.



## The Derbyshire Open Arts Experience - visiting an artist's studio

The aim of Derbyshire Open Arts (DoARTS) is to make more people aware of the vast range of arts produced by artists in Derbyshire. The annual event takes place over the late May bank holiday and offers members of the public a chance to visit studios and other venues where artwork is being exhibited. The artists are keen to engage with visitors; they love discussing their work, skills and techniques.

Many artists exhibiting from their own studios are able to show people where and how they make work - this can give the visitor an interesting insight into the whole creative process.

The Derbyshire Open Arts Team would like to reassure visitors that the artists are friendly and welcoming - they want people to look at their work, engage in conversation (should visitors want to) and make it clear that there is no obligation to buy.

DoArts is not least a social experience based on the appreciation of art and how it is produced. As art is very personal and subjective, artists are aware of the fact that different people like different things. So, if you are visiting venues during the event please don't be shy or feel awkward. Talk to the artists, ask them about their work and enjoy the experience.

## Derbyshire Artists Quotes

- Plenty of discussion between myself and the visitors. I thoroughly enjoyed the event and was very pleased to sell a couple of pieces of my work. The interaction I was able to make between myself and the visitors was very important to me as an artist.
- It isn't all about sales. It's a community event and by working together we make art available for all to enjoy.
- First time exhibiting as part of Derbyshire Open Arts and so very beneficial to engage with customers and allow them to view my work in person, many for the first time.
- The event was exhilarating and exhausting, great fun but hard work. Excellent opportunity to meet face-to-face with visitors and discuss my artwork and means of working.





## Meet the team 2020

We are a voluntary organisation run by a small team. We work hard to create an enjoyable event for both artists and visitors. If you have an interest in the arts and would like to get involved on the committee, please contact us.



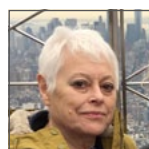
Jennie Merriman,  
3D sculpture, Textiles,  
Chair, Website and Brochure Officer



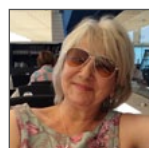
Ann Robson,  
Designer Weaver and Tapestry Artist,  
Secretary and Editor



Nigel Winter,  
Treasurer



Cass Rawlings,  
Textile Artist,  
Minute Secretary



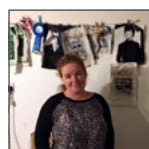
Olinda Everett,  
Potter and Sculptor,  
Mail Chimp Secretary



Adrian Holt,  
Ceramics Based Artist,  
Committee Member



Andrea Joseph,  
Illustrator,  
Social Media Team



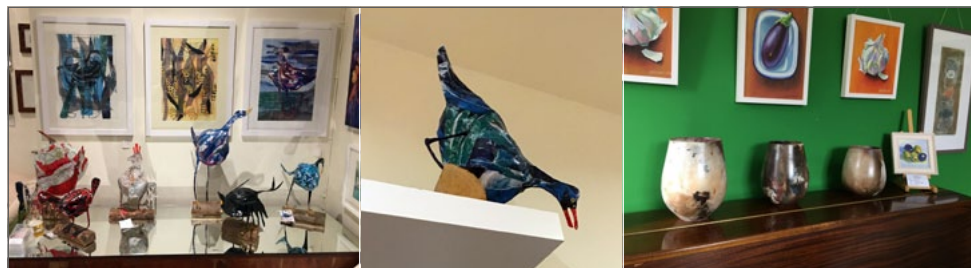
Tracey Coverley,  
2D and 3D Textile Artist,  
Social Media Team and Website



Emma Jane Hough,  
Abstract Painter,  
Public Relations

## A - Z Directory of Artists

Abbott Jonathan	57b	Hand Blown Glass	Matlock
Adamson Kirstie	70a	Magazine Collage	Derby
Adamson Zoe	60	Recycled wearable art	Lea
Allen Joanna	20	Printmaking, Mixed Media, Textiles	New Mills
Aquaramics	58	Hand Built Ceramics	Tansley
Baillie Stephen	55b	Sculpture	Matlock
Baker Maisie-Jane	72b	Mixed Media	Derby
Baraona Lisa	36	Stitched drawing	Buxton
Basnett Jo	15c	Ceramics	New Mills
Bates Ann	56	Ceramics	Matlock
Beckett Carol	12	Various Media	Hayfield
Bedford Susan	70a	Mixed Media	Derby
Beinder Kate	60	Mixed media, recycled materials	Lea
Bernau Meem	41b	Mixed Media	Hathersage
Blatherwick Sue	38b	Ceramics	Buxton
Bowden Ken	9	Pencil & Ink Drawings	Hayfield
Bowden Mel	9	Acrylic & Oil Landscapes	Hayfield
Braithwaite Natasha	39	Photography	Buxton
Brighton Mark	34	Figurative and abstract work	Buxton
Brocklehurst Helen	29	Pottery, Painting & patchwork	Whaley Bridge
Brown Judith	75k	Silver Wire Jewellery	Egginton
Brownsword Julia	32d	Mixed Media Design	Chapel-en-le-Grith
Bunbury Joanna	68	Ceramics	Ilam
Burgess Sarah	55a	Fine Art Textiles	Matlock
Cherry Gael	75m	Botanical Themed Ceramics	Egginton
Cheung Lin	17g	Fine Art	New Mills
Clitheroe Rebecca	28	Mixed Media	Whaley Bridge
Collard Sam	49c	Ceramics	Ashover
Conchie Sheila	19	Embroidered brooches & caskets	New Mills
Connolly John	47	Contemporary Paintings	Bolsover
Copestake Val	19	Patchwork & Quilting	New Mills
Coulam Barbara	51c	Glass	Holymoorside
Coverly Tracey	27	Textile	Whaley Bridge
Culkin Gwenda	50j	Textiles, Mixed Media	Holymoorside
Cunliffe Helen	3	Mixed Media, Paintings, Ceramics	Glossop
Cunliffe Phillip	3	Mixed Media, Paintings, Ceramics	Glossop
Cunningham Tamsin	24	Textiles, Pottery and Paintings	Whaley Bridge
Curious Inky Me	70a	Fine Art Printmaker	Derby
Daisley Ian	63	Photography	Bonsall
Daley Diane	75a	Mosaic	Egginton
Dalling Valerie	50k	Visual Art, Photography	Holymoorside
Daniel Jerry	50e	Photography	Holymoorside
Darbyshire Geraldine	4	Alcohol Ink on Glass	Glossop
Daunt Frances	60	Mixed media animal	Lea
Davies Giles	72a	Magazine Collage	Derby
Davies Stevie	70a	Contemporary Fused Glass	Derby
Dodd Hannah	17f	Textiles	New Mills
Dodd Susan	50c	Mixed media	Holymoorside
Dougan Barbara	65	Fused Glass	Wirksworth
Dougan Graham	65	Ceramics	Wirksworth
Dunn Cath	17c	Painting and Printmaking	New Mills
Elephantstones Gallery	11	Photography, Illustration, Mixed Media	Hayfield
Elliott Steve	68	Pastel Landscapes	Ilam
Ellul Lisa	58	Botanical inspired ceramics	Tansley

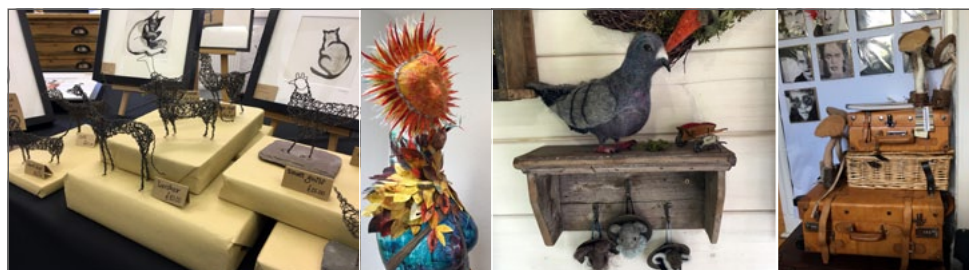


Evans Alison	19	Bags & quilts	New Mills
Evans Lyndon	7a	Illustration, Artist	Little Hayfield
Evans Lynne	45a	Painting and drawing	Chesterfield
Evans Pat	7a	Painting	Little Hayfield
Evans Rachel	68	Woven Willow Baskets	Ilam
Everett Olinda	52f	Ceramics	Darley Dale
Fearne Peggy	52d	Textile/Jewellery	Darley Dale
Feeney Dawn	75h	Metal work	Eggington
Ford Brenda	31	Vibrant Enamelled Jewellery	Chapel-en-le-Frith
Forrest Elizabeth	50b	Lettering and Paper-Making	Holymoorside
Fowler Kim	74	Illustration and Fine Art	Long Eaton
Fraser Faith	10	Ceramics	Hayfield
Frost Harry	23	Contemporary Oil Painting	New Mills
Gale Andrew	12	Various Media	Hayfield
Gallery 23	21	Photography, Mixed Media	New Mills
Gilliam-Hull Michelle	58	Kiln Glass	Tansley
Glover Sylvia	75i	Ceramics - Tableware	Eggington
Gostick Gilly	22	Drawing, Painting & Mixed Media	New Mills
Graham Mary	74	Jewellery/Ceramics	Long Eaton
Grantham Andrew	30	Potter	Whaley Bridge
Gray Ruth	49b	Fine Art Painting	Ashover
Grice Carly	13	Abstract Stone Sculptures	Hayfield
Grieve Stephen	7b	Jewellery/Goldsmithing	Little Hayfield
Griffith Michela	17b	Photography	New Mills
Griffiths Miranda	54	Kiln Formed Fused Glass	Matlock
Gumbley Ray	74	Photography	Long Eaton
Halliday Colin	69	Oil Painting	Duffield
Hallam Eddie	59	Bronze Sculptures	Riber
Hallam Paula	66a	Fine Art Painting	Wirksworth
Hallam-Elvin Janet	31	Felted Animals and Birds	Chapel-en-le-Frith
Harrison Tony	30	Potter	Whaley Bridge
Harrison Tricia	30	Artist & Sculpture	Whaley Bridge
Hassan Jo	62c	Leather, Mixed Media	Whatstandwell
Hawthorn Reuben	72c	Fine Art, Portrait Painting	Derby
Hazel Lynn	60	British Wildlife Sculptures	Lea
Hazelwood Colette	32b	Contemporary Jewellery	Chapel-en-le-Frith
Helm Barbara	12	Various Media	Hayfield
Heywood Denise	1b	Watercolours	Glossop
Heywood Karen	1b	Paintings, Mixed Media	Glossop
Hickmott Ruby	67	Painting - mixed media	Parwich
Hicks Pippa	1a	Painting and Illustration	Glossop
Hobson Jean	1b	Painting & Prints	Glossop
Holbrook Oksana	58	Hooked rag rugs	Tansley
Hollis Kath	52g	Ceramics and painting	Darley Dale
Holt Adrian	1b	Ceramic and Plaster Sculpture	Glossop



Hook Deborah	58	Carved Glass	Tansley
Horton James	8	Drawings and Paintings	Hayfield
Hough Emma Jane	71	Abstract Painter	Derby
Hoyle Jan	31	Fibre Painted Landscapes	Chapel-en-le-Frith
Hudson Val	44	Contemporary Paintings & Prints	Barlow
Humberstone Anne	15d	Textile Art, Printmaking, Pastels	New Mills
Humphrey Janet	60	Textile Artist	Lea
Hunns David	62a	Oil and Watercolour Landscapes	Whatstandwell
Jacobs Helen	30	Potter	Whaley Bridge
Jansen Steph	62b	Wet Felt Paintings	Whatstandwell
Jenny Neale Images	58	Photography	Tansley
JD Surface Art	74	Mixed Media Artist	Long Eaton
Johnson Anne	10	Pencil & Crayon Drawings	Hayfield
Jones Christine	58	Lino print & Collagraph	Tansley
Jones Stuart	60	Furniture, recycled pallets	Lea
Joseph Andrea	13	Plant based Art	Hayfield
Jude Shore Design	58	Contemporary Felt	Tansley
Karlsson Ingrid Katarina	32e	Mixed Media	Chapel-en-le-Frith
Kisby Jo	1b	Portraits oil & charcoal	Glossop
Kime Adele	17a	Jewellery	New Mills
Leaf Helen	75c	Antler, Mixed Media, Jewellery	Eggington
Lane Patricia	46	Mixed media Landscapes	Elmton
Langley Mark	68	Pencil and oil landscapes	Ilam
Larkin Graham	1b	Paintings, Mixed Media	Glossop
Levitt Howard	17d	Drawings & Paintings	New Mills
Lewis Gaynor	64a	Painting, Oils, Acrylics, Watercolour	Wirksworth
Lewis Zaza	70b	Card-Cutting and Fabric	Derby
Lolligee Natasha	14	Multi-Disciplinary	Birch Vale
Longmate Carl	37	Oil Painter	Buxton
Lowther David	30	Artist	Whaley Bridge
Lyon Ann	10	Ceramic and Sculpture	Hayfield
Mail Colin	5	Woodturner	Glossop
Mather Jenny	40	Painting - various media	Bamford
Marsden Ruth	15b	Acrylic Paintings and Prints	New Mills
Mary Elizabeth	41a	Painting, Photography, Digital Art	Hathersage
McCall Susan	10	Abstract Landscape Paintings	Hayfield
McFarlane Caroline	75g	Fine Art Painting/Drawing	Eggington
Menary Anne	52e	Hand Stitch, Textiles	Darley Dale
Merriman	52a	Weaving, Sculpture, Print	Darley Dale
Minifi	74	Print maker	Long Eaton
Minoan Mosaic Studio	70d	Mosaics	Derby
Money Hazel	48	Landscape Paintings	Clay Cross
Morley Sarah	33b	Oil & Mixed Media	Buxton
Moss Linda	5	Textile Artist	Glossop
Mr Ps Pots	70a	Pottery & Fine Art	Derby





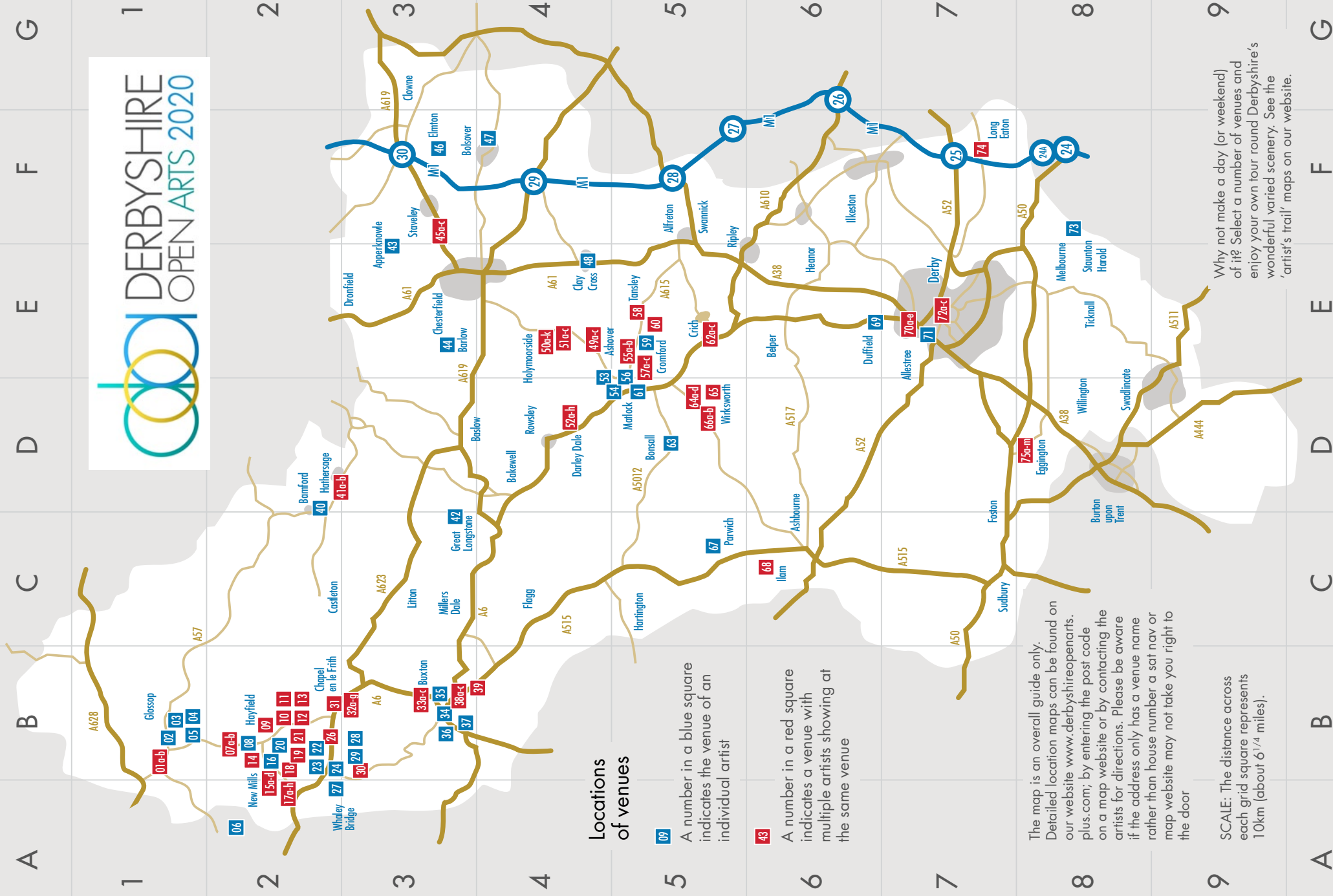
Nason Lesley	75d	Ceramics	Egginton
Nason Terry	75e	Thrown Functional Stoneware	Egginton
Newfields Gallery	68	Wood Carving & Ceramics	Ilam
Nicoll Annie	52h	Mosaics and Textiles	Darley Dale
O'Brien Patricia	45b	Fine Arts Print	Chesterfield
O'Donoghue Beverly	32a	Contemporary Painting	Chapel-en-le-Frith
Orme Sandra	39	Fine Art Pastels & Charcoal	Buxton
Parkin Sarah E A	50f	Watercolour Landscapes Painting	Holymoorside
Parkin Simon	2	Paintings	Glossop
Parmar Anisha	70e	Jewellery	Derby
Pentimento Ceramics and Print	17h	Ceramics and Printmaking	New Mills
Perkins Jill	50h	Textiles	Holymoorside
Perkins Sarah	70c	Animal Artist	Derby
Petit Thomas	57a	Glassblowing	Matlock
Pheasey Kate	51a	Mosaic, Mixed Media	Holymoorside
Plant Barbara	26	Multi media	Whaley Bridge
Platt Lesley	42	Painting & Embroideries	Great Longstone
Priestman Kate	30	Wildlife Graphic Artist	Whaley Bridge
Prince Sue	68	Modern Folk Artist	Ilam
Polmear Joanne	64b	Acrylic & Oil Paintings	Wirksworth
Rawlinson David	35	Oil Painting	Buxton
Read Sheila	75f	Jewellery	Egginton
Robinson Maggie	68	Oil or watercolour landscapes	Ilam
Rose Tim	68	Watercolour & oils	Ilam
Riley Jillian	58	Porcelain apothecary vessels	Tansley
Rothwell Jenny	15a	Jewellery	New Mills
Sampson David William	74	Ceramics	Long Eaton
Sampson Gary	68	Potter	Ilam
Sampson Valda	50d	Painting and Embroidery	Holymoorside
Sazzi Creations	70a	Textile Artist	Derby
Searle Phil	66b	Photography	Wirksworth
Sharliss Beth	53	Jewellery	Matlock
Sharon Louise Art	45c	Mixed Media	Chesterfield
Sheldon Karin	68	Jewellery	Ilam
Sheppard Sue	9	Mixed Media	Little Hayfield
Sillar Vivienne	50a	Ceramics	Holymoorside
Sidwell Emma	17e	Pen, Watercolour, Jewellery	New Mills
Ray Sylvester	68	Wooden Boxes	Ilam
Singer Pete	52g	Ceramics	Darley Dale
Slyvester Ray	68	Wood decorative Boxes	Ilam
Smart Pam	33c	Fine Art	Buxton
Smith Alison	50g	Handcrafted Silver Jewellery	Holymoorside
Smith Charlotte	64c	Printmaking	Wirksworth
Smith Lynn	64d	Paintings	Wirksworth
Smith Mark	75m	Nautical ceramics	Egginton

Stabana Katie	38c	Nature Art, Mixed Media	Buxton
Steeden Margaret	32c	Textiles	Chapel-en-le-Frith
Stone Donka	61	Oil, Landscape, Nature	Matlock Bath
Stowell Kay	5	Glassmaker	Glossop
Studio Artists	31	Pastel & mixed media	Chapel-en-le-Frith
Swainson Andrew	9	Illustrator	Little Hayfield
Swift Elizabeth	24	Textiles, Pottery and Paintings	Whaley Bridge
Tarbutt Geoff	31	Ceramics	Chapel-en-le-Frith
Tarnowska Maria	7a	Ceramic Designer	Little Hayfield
Taylor Chris	1b	Calligraphy	Glossop
Taylor Lynne	1b	Ceramics	Glossop
Taylor Ruth	14	Multi-Disciplinary	Birch Vale
The Corner Studio	58	Paintings Sky & Sea	Tansley
The Peak Potter	32f	Ceramics & Pottery	Chapel-en-le-Frith
The Soap Caddy	58	Bathing Products	Tansley
Toft Jo	10	Ceramics & Stoneware	Hayfield
Toft David	1b	Photography	Glossop
Trevor Sue	75j	Textiles	Egginton
Turner David	57c	Forged Metal Sculpture	Matlock
Vallance Jan	6	Acrylic & Mixed Media	Marple
Vasey Alison	16	Painting	New Mills
Vaudin William	50i	Drawing, Digital Art	Holymoorside
Walker Niki	75l	Fused Glass Homeware	Egginton
Walton Mo	52b	Jewellery and painting	Darley Dale
Wass Janet	10	Jewellery	Hayfield
Waterhouse Roger	68	Woodturning	Ilam
Watson Kathryn	33a	Sculptural Ceramics	Buxton
Webb Christine	23	Printmaking	Whaley Bridge
Webster-Lajmi Rebecca	38a	Botanical Watercolours	Buxton
Wellby Liz	49a	Fine Art Painting	Ashover
Westwood Kate	75b	Painting and Prints	Egginton
Why Not Wood	58	Wood Turning	Tansley
Wignall Rosemary	26	Multi media	Whaley Bridge
Wilding Eilean	51b	Textiles Mixed Media	Holymoorside
Wilkinson Lynne	43	Fine Art	Dronfield
Williams Karen	52c	Sculpture	Darley Dale
Wilson Carol	31	Felt	Chapel-en-le-Frith
Wood Karl	32g	Photography	Chapel-en-le-Frith
Wood Leigh	73	Metal fabrication, Sculpture	Staunton Harold, Melbourne
Wotton Debbie	19	Patchwork & Quilting	New Mills
Young Joy	19	Knitting & Crochet	New Mills

### Liability - Notice to All

Derbyshire Open Arts, the artists and craftspeople or the venues cannot be held liable, jointly or individually, for any loss or injury sustained at any of the venues or consequentially, and all appropriate precautions for security and safety must be taken by individuals at the event or on subsequent occasions when attending for tuition or other purposes. Be aware that venues may be equipped with chemicals, tools, machinery or other materials or processes all or any of which may be hazardous.

Derbyshire Open Arts does not inspect the venues, therefore each individual person working at or visiting any of the venues takes responsibility for any attendant risk to which he or she may be subject.





# DERBYSHIRE OPEN ARTS 2020

Spring Bank Holiday Weekend 23th 24th 25th May

